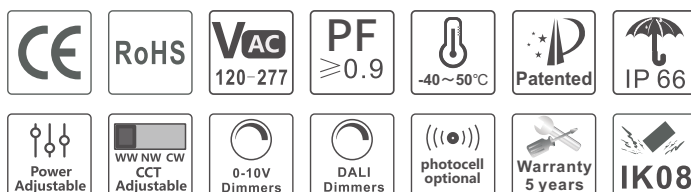




# Venus Series Flood Light

## FLV-050/100/150/200/300-AW-XXK-ZYYY



### Description:

The Flood Light Venus series has an innovation design and different optics for the best performance in the lighting distribution. Whole fixture uses outdoor electrophoresis and powder coating with strong anti-corrosion treatment. This is the best choice for all kind of different applications needed, like recreational sports, area lighting and others. The lamp it has a convenient flap for quick access to driver compartment, making more easy the maintenance and replace the lens. The heatsink has excellent cooling performance that assures the long lifespan of the electronic components. As an extra feature the lamp can be linkable one by one, so can be configured in different kind of projects.

### Features:

1. Buckle design, tool free open and maintenance , wiring and lens replacement.
2. Power and CCT adjust, greatly reduces stocking SKU.
3. External vent/Respirator: Avoid internal fogging and frosting.
4. Wide choice of optics to suit more applications: asymmetrical and symmetrical.
5. 5mm thickness durable tempered glass ensure IK08.
6. 5 Years warranty.



## Technical parameters:(Light control)

Turn-On Level	Turn-Off Level	Time-Delay
50 lx	130 lx	>3 s

Different environmental may change the products parameters!

## Technical parameters:

Model	CCT	Lumen(lm) (±10%)	Power (±10%)	Adjustable power	Beam (angle°)	Voltage, Frequency	CRI	PF
FLV-050-AW-65K-ZYYY	5500-6500K	6000	50	50	30°/60°	AC120-277V 50/60Hz	>80	≥0.9
FLV-050-AW-40K-ZYYY	3800-4300K	6250		40	90°/120°			
FLV-050-AW-30K-ZYYY	2700-3200K	5760		30	P50/P50-8 /P10/T4			
FLV-100-AW-65K-ZYYY	5500-6500K	13000	100	100	30°/60°	AC120-277V 50/60Hz	>80	≥0.9
FLV-100-AW-40K-ZYYY	3800-4300K	13350		70	90°/120°			
FLV-100-AW-30K-ZYYY	2700-3200K	11700		50	P50/P50-8 /P10/T4			
FLV-150-AW-65K-ZYYY	5500-6500K	19500	150	150	30°/60°	AC120-277V 50/60Hz	>80	≥0.9
FLV-150-AW-40K-ZYYY	3800-4300K	19800		120	90°/120°			
FLV-150-AW-30K-ZYYY	2700-3200K	17600		100	P50/P50-8 /P10/T4			
FLV-200-AW-65K-ZYYY	5500-6500K	26000	200	200	30°/60°	AC120-277V 50/60Hz	>80	≥0.9
FLV-200-AW-40K-ZYYY	3800-4300K	26100		170	90°/120°			
FLV-200-AW-30K-ZYYY	2700-3200K	23400		150	P50/P50-8 /P10/T4			
FLV-300-AW-65K-ZYYY	5500-6500K	39000	300	300	30°/60°	AC120-277V 50/60Hz	>80	≥0.9
FLV-300-AW-40K-ZYYY	3800-4300K	39120		240	90°/120°			
FLV-300-AW-30K-ZYYY	2700-3200K	35100		200	P50/P50-8 /P10/T4			

- 300W and 50W without DALI dimming
- 50W without CCT adjustment.
- Only 120° CCT adjustable;
- 150lm/W optional (Ra70).

## Coding principle



- First:D:Dimming /S:induction /Blank:Nonfunctional
- Second:Light efficiency discrimination, 3:130lm/W(Ra80) 5:150lm/W(Ra70)
- Angle:1/P10,2/120°,3/30°,4/T4,5/P50,6/60°,8/P50-8,9/90°;
- Fourth:Power supply type: 1.Lifud; 2.BQ; 3.SOSEN
- Color Temperature:60( 5500-6500K)/40( 3800-4200K)/30( 2700-3200K)/
- TC:T( Tunable);C( CCT: 30K-40K-60K)
- K: Units
- Voltage: AH:220-240VAC/AW:120-277VAC
- Power :50W/100W/150W/200W/300W
- Power Tunable:(T50/T100/T150/T200/T300)
- FL:Flood Light
- V:Venus

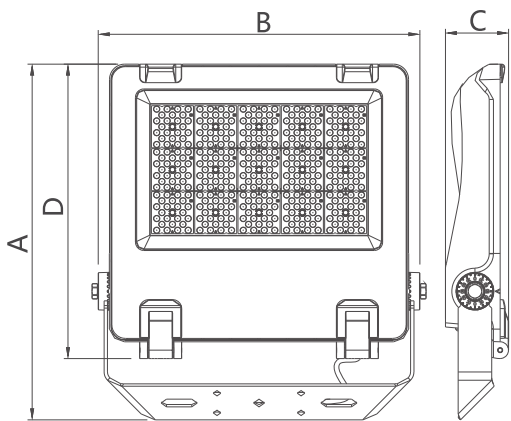


### Application:

For building lighting, area lighting, recreational sports lighting, accent lighting, parking lots etc.



### Dimension (Unit:mm/inch):



Identification	A	B	C	D
50W	266/10.47"	232/9.14"	66/2.59"	216/8.5"
100W	340/13.39"	294/11.58"	70/2.75"	270/10.63"
150W	415/16.34"	294/11.58"	70/2.75"	388/15.28"
200W	420/16.54"	368/14.49"	75/2.95"	345/13.58"
300W	500/19.68"	432/17.0"	75/2.95"	425/16.73"



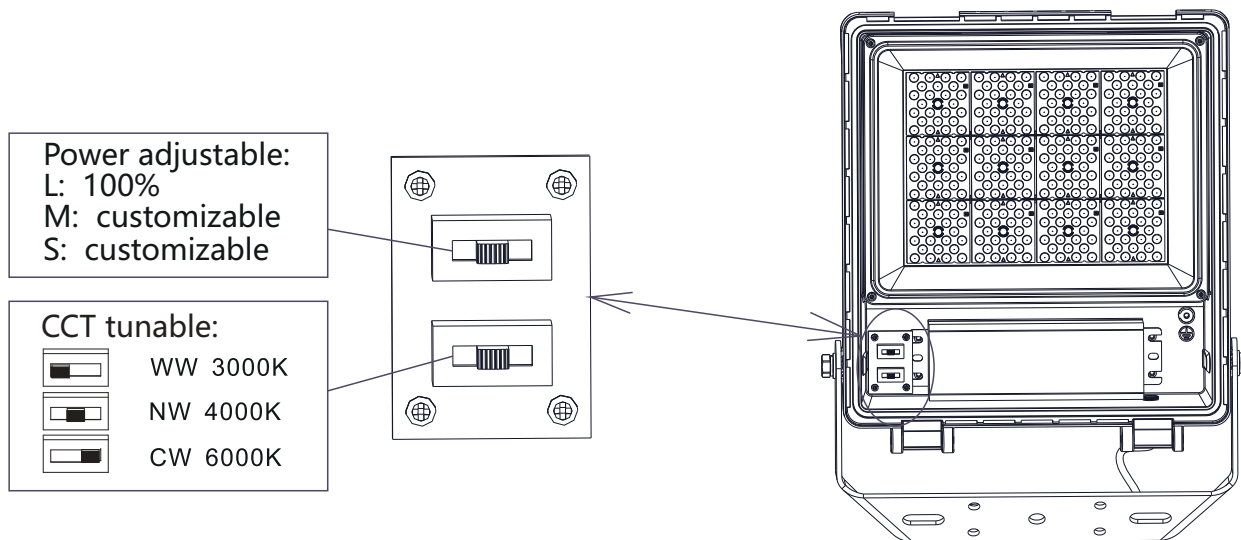
### Light control:

- When Ambient illumination is <math>< 50\text{lx}</math>,the light control is turn on automatically.
- When Ambient illumination is >math>130\text{lx}</math>,the light control is tun off automatically.



### 3CCT tunable and power adjustment:

When used in different scenes, users can manually adjust different CCT and power adjustment according to different environmental requirements.



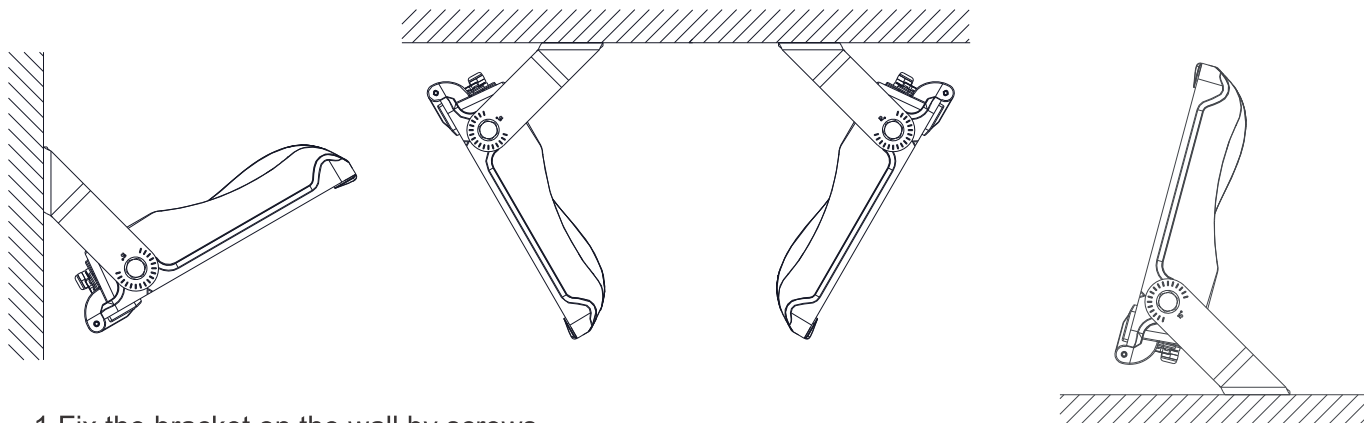
### power adjustment:

Switch	Location	50W	100W	150W	200W	300W
<input type="checkbox"/>	L	50W	100W	150W	200W	300W
<input type="checkbox"/>	M	40W	70W	120W	170W	240W
<input type="checkbox"/>	S	30W	50W	100W	150W	200W



### Installation:

#### U-shaped bracket:



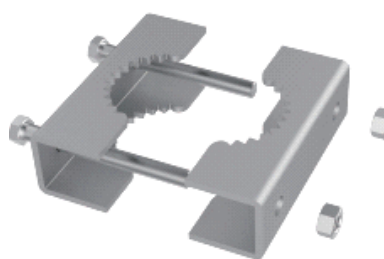
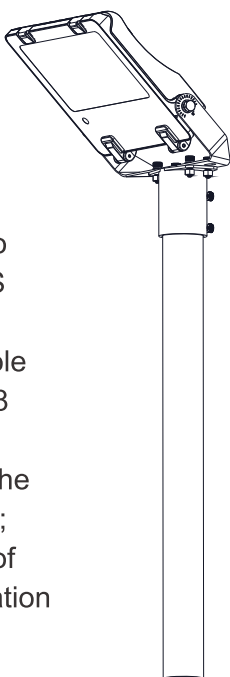
1. Fix the bracket on the wall by screws
2. Adjust the lamp body to proper orientation
3. Fix the screws that connecting the bracket and the lamp body.
4. Connect the wires. Brown wire is L, blue wire is N, and yellow-green wire is G.

#### Accessories series:



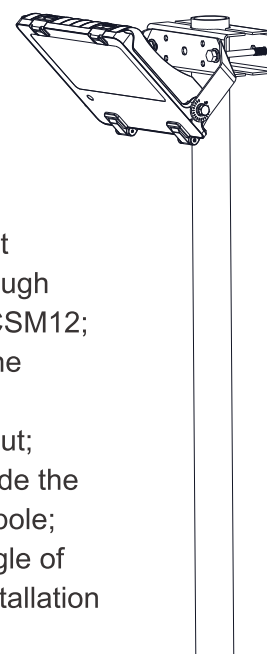
Pole mount adapter

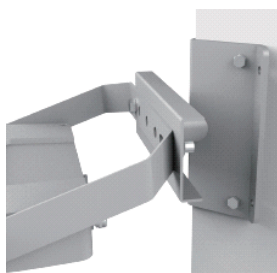
1. Fix the pole mount adapter to the top of the pole with 2PCS m8 screws;
2. Fix the lamp bracket to the pole mount adapter with 4PCS M8 screws and nuts;
3. Connect the wires and hide the excess wires in the light pole;
4. Adjust the illumination angle of the lamp and fix it, the installation is complete.



Clamp adapter

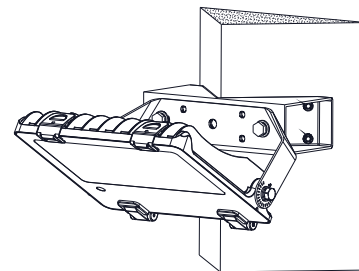
1. Connect the lamp bracket to the clamp adapter through the bolts and nuts of 2PCSM12;
2. Install the light pole into the middle hole of the fixture adapter and tighten the nut;
3. Connect the wires and hide the excess wires in the light pole;
4. Adjust the illumination angle of the lamp and fix it, the installation is complete.



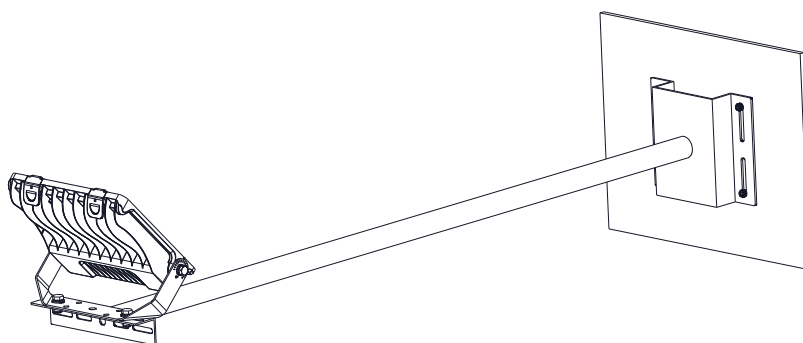


Corner adapter

1. Fix the corner adapter to the corner position with 4PCS M8 bolts
2. Fix the lamp bracket to the corner adapter with 2PCS M12 bolts and nuts;
3. Connect the wires and hide the excess wires ;
4. Adjust the illumination angle of the lamp and fix it the installation is complete.

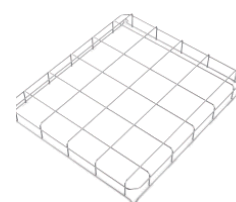
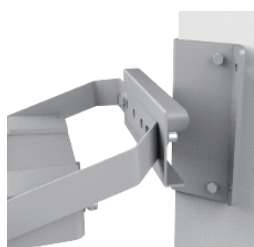
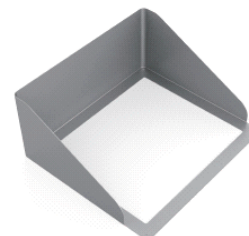
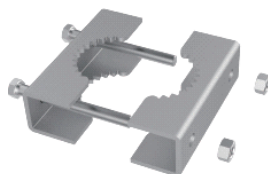


Billboard adapter




1. Use 4PCS M8 bolts to fasten the billboard adapter to the billboard fixing bracket;
2. Fix the lamp bracket to the billboard adapter with 2PCS M12 bolts and nuts;
3. Connect the wires and hide the excess wires in the light pole;
4. Adjust the illumination angle of the lamp and fix it, the installation is complete.

**Accessories series :**

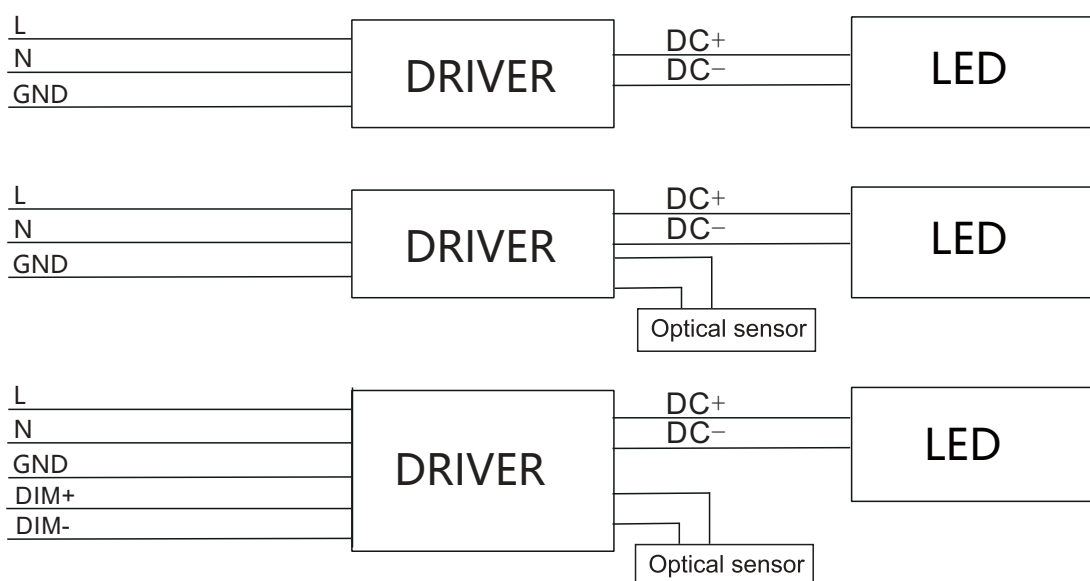




## Wiring diagram:

	Link in series: Loading capacity@220-240V	
	3 cores cable	5 cores cable
0.75mm <sup>2</sup>	∅ 6.8mm/800W	∅ 8.5mm/800W
1.0mm <sup>2</sup>	∅ 7.4mm/1000W	∅ 8.8mm/1000W
1.5mm <sup>2</sup>	∅ 8.0mm/1300W	∅ 9.6mm/1300W
2.5mm <sup>2</sup>	∅ 9.7mm/2000W	

Need to customize beyond the above specifications



## Packing information:

Item No	Carton Size		Quantity	G.W.
FLV-050-AW-XXK-ZYYY	Inner Box	320*310*110mm	1pcs	2.0Kg
	Outer Carton	565*355*325mm	5pcs	12.5Kg
FLV-100-AW-XXK-ZYYY	Inner Box	390*360*110mm	1pcs	3.00Kg
	Outer Carton	565*405*375mm	5pcs	17.5Kg
FLV-150-AW-XXK-ZYYY	Inner Box	465*365*110mm	1pcs	3.9Kg
	Outer Carton	565*480*480mm	4pcs	18.0kg
FLV-200-AW-XXK-ZYYY	470*450*120mm		1pcs	6.3kg
FLV-300-AW-XXK-ZYYY	550*550*120mm		1pcs	8.5kg



### **Installation requirement:**

1. Power off before installation; and the lamp must be installed by professional electrician;
2. Confirm installation hole and location;
3. Connect light wire to power wire, seal the joint with insulation;
4. Make sure the installation material can endure the lamp weight; and install the lamp in the operation location.

### **! Notice:**

1. Please first read the product specification carefully to make sure the using environment conform to specification, then it can be installation;
2. Please confirm input voltage, frequency before installation;
3. This product must be installed by electrician;
4. If there is any damage to the power wire or shell of the product, it should be taken as defective product and do not use it;
5. Dangerous high voltage, non-professionals are not allowed to maintain the product;
6. If external soft cable or soft wire of the light is damaged, it should be replaced by manufacturer or service agent or personnel with similar qualification to avoid danger.
7. Please pull the power cord to the wiring compartment at the bottom of mounting pole and make the branch connection, the input wire connected at the bottom of the pole. (the length of driver input wire meet the demand of customer's).
8. Use listed water proof bushing at outlet box cover (if applicable).