



version A
(slim aluminum frame)



version B
(frameless)

LED Smart Mirror With Touch Switch



Function

1 3 Color Settings:6000K-4000K-3000K

6000K



4000K



3000K



2 Intelligent one-button defogging function

Turn on the one-button defogging function, immediately get a clear vision, no need to wait for dressing



Electric heating
partial defogging function

3 Stepless Dimming

Intelligent touch switch, adjust color and brightness as you like



100% Brightness 75% Brightness 50% Brightness 25% Brightness 5% Brightness

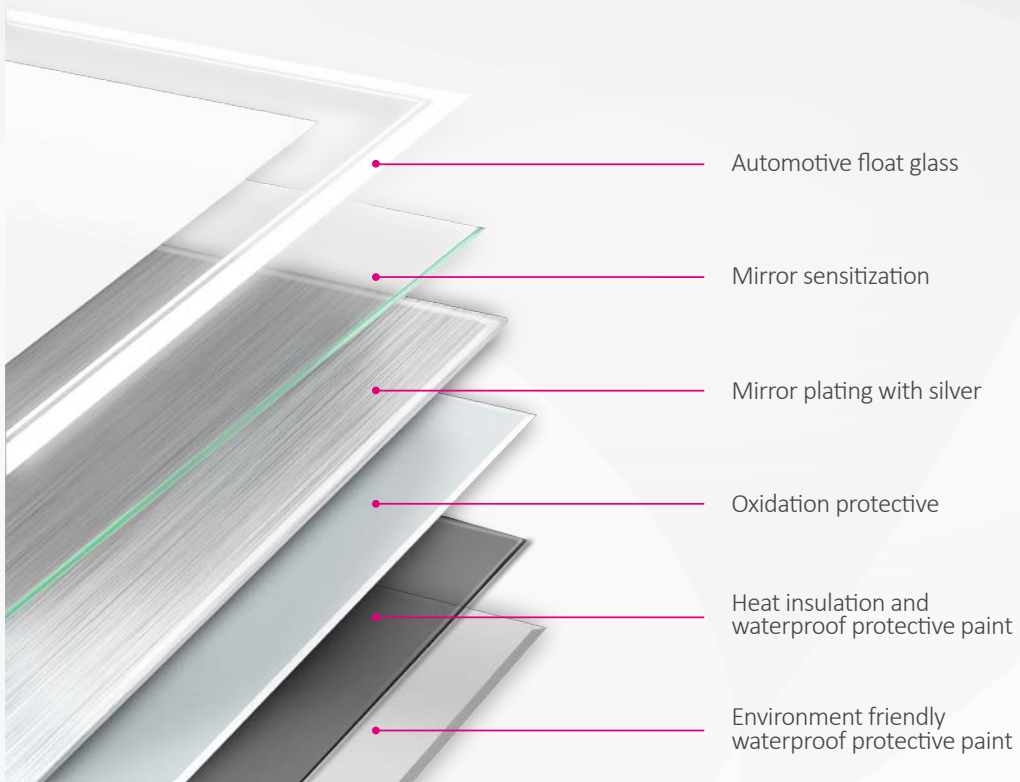
4 High Definition Imaging

5MM HD environment-friendly silver mirror, no deformation, high distortion, clear imaging, anti-corrosion, fast fog dispersion



5 5MM High Definition No Bronze Silver Mirror

More Durable /High Definition /Anti-Oxidation /Multi-Layers Protection

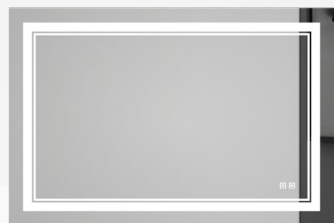


6 Safe explosion-proof

High viscosity protective film with explosion-proof glass, broken without splash, to keep you and your family safe



7 Support horizontal and vertical hanging

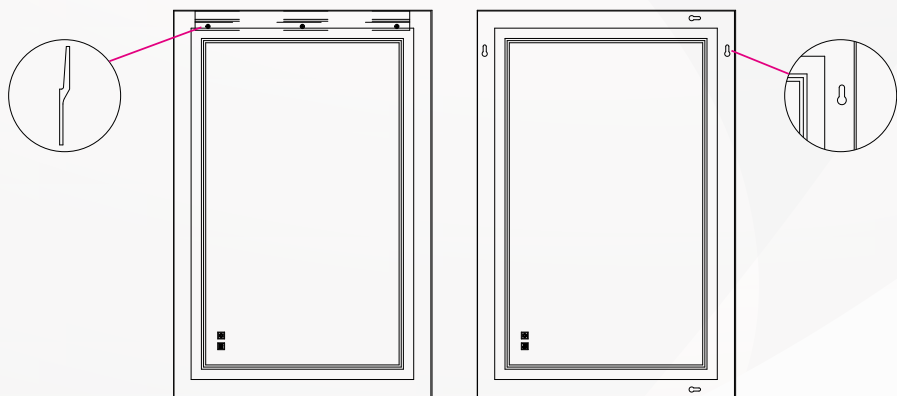


The mirror hangs horizontally



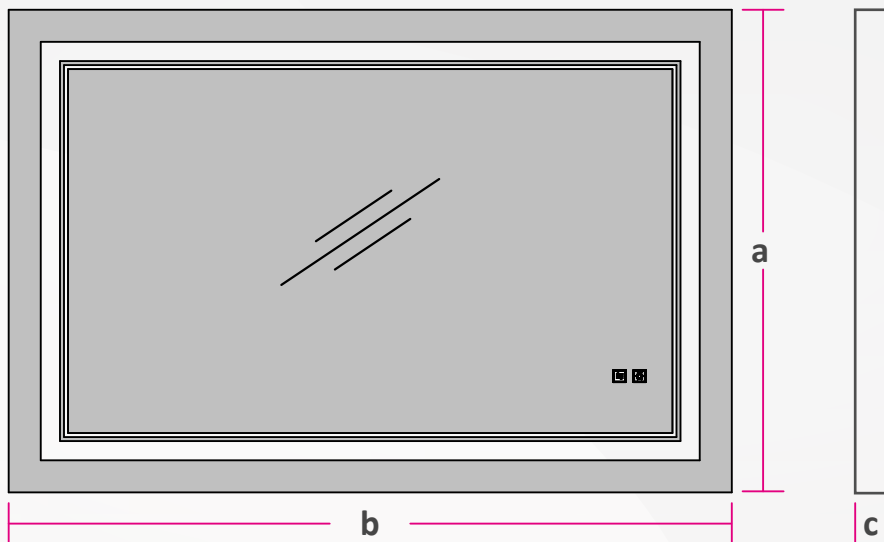
The mirror hangs vertically

8 Support hardy hole and hook, two quick installations



9 The mirror fits seamlessly into the wall

Product specifications



Product specifications

Model	Width (a)	Length (b)	Thickness (c)	CRI	Color temperature (K)	Input voltage (V)	Lamp Power (W)	Defogger Power (W)	PF
SC-SM2028-24W-R02-A	500mm	700mm	40mm	≥ 90	3000K 4000K 6000K	220-240V	24	15	>0.9
SC-SM2432-28W-R02-A	600mm	800mm					28	30	
SC-SM2436-30W-R02-A	600mm	900mm					30	30	
SC-SM2836-32W-R02-A	700mm	900mm					32	30	
SC-SM2028-24W-R02-B	500mm	700mm					24	15	
SC-SM2432-28W-R02-B	600mm	800mm					28	30	
SC-SM2436-30W-R02-B	600mm	900mm					30	30	
SC-SM2836-32W-R02-B	700mm	900mm					32	30	



Lighting switch

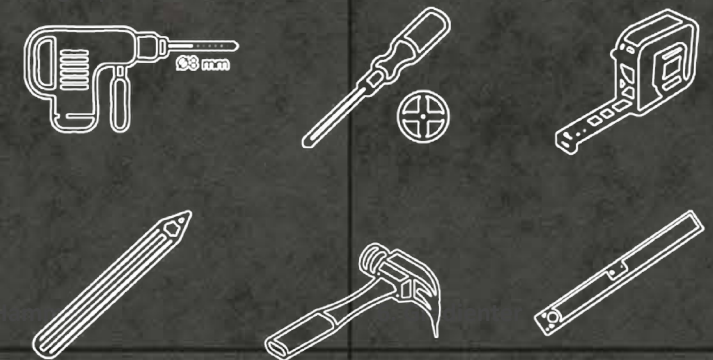
Defog switch

User guide of LED smart mirror

- ◆ The switch button is a light touch switch with high sensitivity
- ◆ The touch switch is designed with a display function. After turning on the power, the backlight lights up in white. When the finger touches the button, the white turns to blue. Touch it again, the blue turns to white and cycle in turn.

Short press the button once, the backlight turns white, and meanwhile the LED light is on. Short press the button once, switch between normal white/warm white/natural white, and cycle. Long press the button, the LED brightness will gradually decrease from 100% to 10%, long press again to adjust the brightness in the reverse direction. Lightly touch the defogging button to turn on the one-button smart defogging function

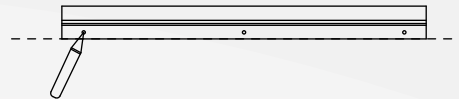
Installation tools



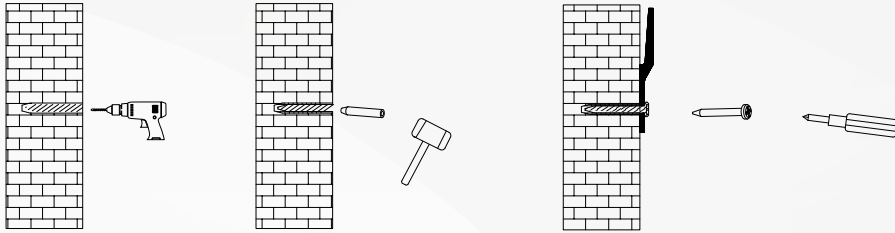
◆ Installation (hook)



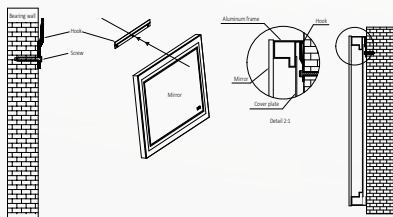
1. Draw a 0.5 meter horizontal line on the wall with the gradienter



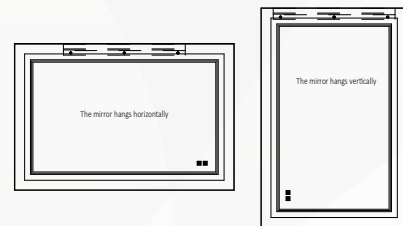
2. Use the hook to attach the horizontal line, use the pencil to draw 3 points through the screw hole



3. Drill 3 holes on the 3 points with percussion drill, and insert rubber plugs, stick the hooks on the wall and screw in the screws.

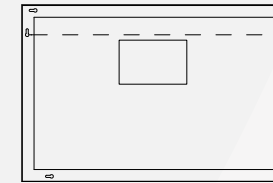


4. Hang up the mirror and two people is suggested to operate



5. The mirror is close to the wall and the installation is completed

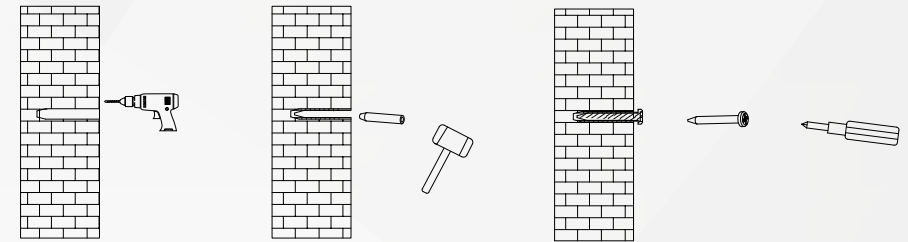
◆ Installation (hardy hole)



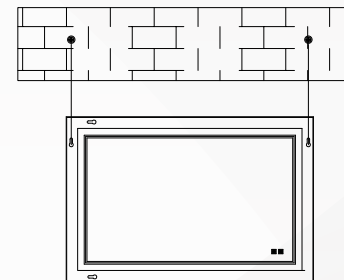
1. Measure the center distance of the two hardy holes in the frame with the measuring tape



2. According to the measured distance, use the pencil to draw 2 points on the wall

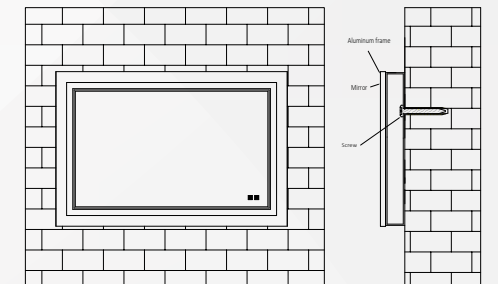


3. Drill 2 holes on the 2 points with percussion drill, and insert rubber plugs, screw in the screws.



4. Hang up the mirror and two people is suggested to operate

Stick the mirror to the wall so that the frame slides into the hanging strip

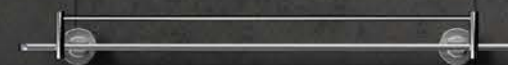


5. The mirror is close to the wall and the installation is completed



Application

Widely used in home, hotel, office, shopping mall, and other places



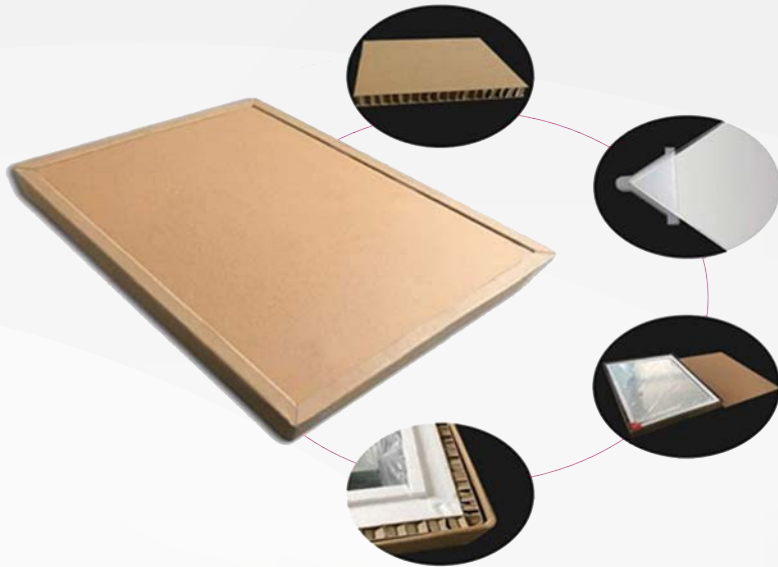


Application

Widely used in home, hotel, office, shopping mall, and other places



Packaging diagram



Notice



- ◆ Please read the specification first, to make sure the service environment matches the condition in the specification before using.
- ◆ Please confirm the applicable power supply before using.
- ◆ Make sure the switch of product is off before connect to the power supply to prevent electric shock.
- ◆ Operation against rules may damage your property even harm to your personal safety
- ◆ Preliminarily estimate required quantity of LED panel lights, then according to the power rating of single panel light to figure out the total power and design power supply plan.
- ◆ Dangerous high voltage, Non-professionals are not allowed to maintain the products.
- ◆ If the exterior flexible cable or wire is damaged, it must exchange by the supplier, its agent or other similar qualified personnels to avoid dangers.

Model	Size (W*L*H)	Weight (G.W.)	Weight (N.W.)
SC-SM2028-24W-R02-A	600*800*115mm	8.7KG	6KG
SC-SM2432-28W-R02-A	700*900*115mm	11.5KG	8KG
SC-SM2436-30W-R02-A	700*1000*115mm	13KG	9KG
SC-SM2836-32W-R02-A	800*1000*115mm	15.2KG	10.5KG
SC-SM2028-24W-R02-B	600*800*115mm	8.7KG	6KG
SC-SM2432-28W-R02-B	700*900*115mm	11.5KG	8KG
SC-SM2436-30W-R02-B	700*1000*115mm	13KG	9KG
SC-SM2836-32W-R02-B	800*1000*115mm	15.2KG	10.5KG