



Temperature test report 温度测试报告



Model 型号:	方形面板灯	0
Weight 重量:	/	Kg
Test voltage 测试电压:	220	VAC
Enclosure size 外廓尺寸:	600×600×8.2mm MM	power 功率:
Manufacture 制造厂商:	Signcomplex	39.3 W

Time passes 时间经过: 2021-6-8 10:41 → 2021-6-8 14:42 .+...

Test position 测试位置:	OH	0.5H	1H	1.5H	2H	2.5H	3H	3.5H	4	4.5H	5H
Electrolytic capacitor 电解电容-CE2 (1)	32.41	35.01	52.81	65.01	71.81	75.51	77.71	79.01	79.81	80.21	80.41	80.41	80.51
diode 二极管-DS1 (2)	32.21	65.51	93.31	104.4	110	112.8	114.4	115.5	115.9	116.1	116.1	116.1	116
Transformer-Coil 变压器-线圈 (3)	32.01	43.71	80.71	98.11	106.6	111.2	113.9	115.6	116.6	117	117.3	117.4	117.4
Transformer-core 变压器-磁芯 (4)	32.01	39.81	76.31	94.21	102.9	107.7	110.3	111.9	112.8	113.2	113.4	113.5	113.6
CBB capacitor CBB电容 (5)	32.01	35.81	61.71	73.81	79.91	83.01	84.81	86.01	86.61	87.01	87.11	87.21	87.21
Rectifier bridge 整流桥-DB1 (6)	29.01	53.21	73.51	83.01	88.31	91.21	92.41	93.71	94.21	94.11	94.11	94.71	94.81
IC IC-U1 (7)	31.61	40.91	67.61	79.81	86.01	89.31	91.11	92.31	93.01	93.31	93.51	93.51	93.51
FAMOS MOS管-Q1 (8)	31.61	32.21	81.51	96.91	104.6	109	112.2	114.4	115.4	116.1	116.4	116.5	116.6
TC TC点 (9)	32.21	34.11	59.21	75.21	82.51	86.31	88.91	90.11	91.21	91.61	92.21	91.91	92.11
negative abode 灯珠焊脚- (10)	31.41	35.81	64.71	68.11	69.21	69.91	70.41	70.81	71.11	71.01	71.11	71.11	71.01
negative abode 灯珠焊脚- (11)	31.11	58.51	74.11	77.61	78.61	79.31	79.81	80.21	80.41	80.41	80.31	80.11	80.01
negative abode 灯珠焊脚- (12)	31.01	52.11	64.61	67.41	68.51	69.21	69.71	70.11	70.31	70.31	70.41	70.31	70.31
Ambient temperature 环境温度 (13)	31.71	36.81	39.01	41.51	42.61	43.41	44.41	45.01	45.01	44.91	45.01	44.91	45.11

4.5-5H Average stable temperature: 4.5-5H 平均稳定温度	(1)	(2)	(3)	(4)	(5)	(6)	(7)	(8)	(9)	(10)	(11)	(12)	(13)
	80.2	116.1	117	113.2	86.96	94.35	93.3	116.2	91.84	71.1	80.34	70.37	45.03

Judging basis 判定依据:

- The ambient temperature is 45 degrees Celsius. 环境温度45℃
- cooling pad temperature below 95℃ 焊盘温度小于95℃
- Power housing surface temperature below 90℃ 电源外壳表面温度小于90℃
- LED base and the aluminum base temperature difference is less than 10 °C 灯基板与散热器温差小于10℃
- Electronic components is below 120 °C 电子元器件低于120℃

Test results 实验结果: NG PASS

Ambient temperature: 45.025 °C

Humidity: 60%

Test equipment: Agilent 34970-A

Confirm

审核:

mo fu mei

Test Engineer: yang gui y

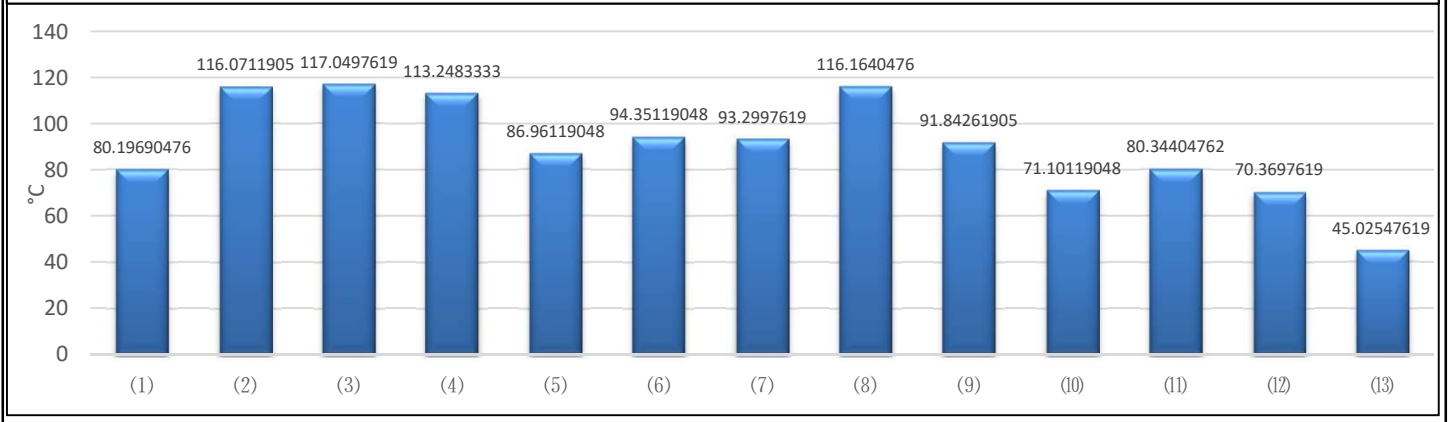
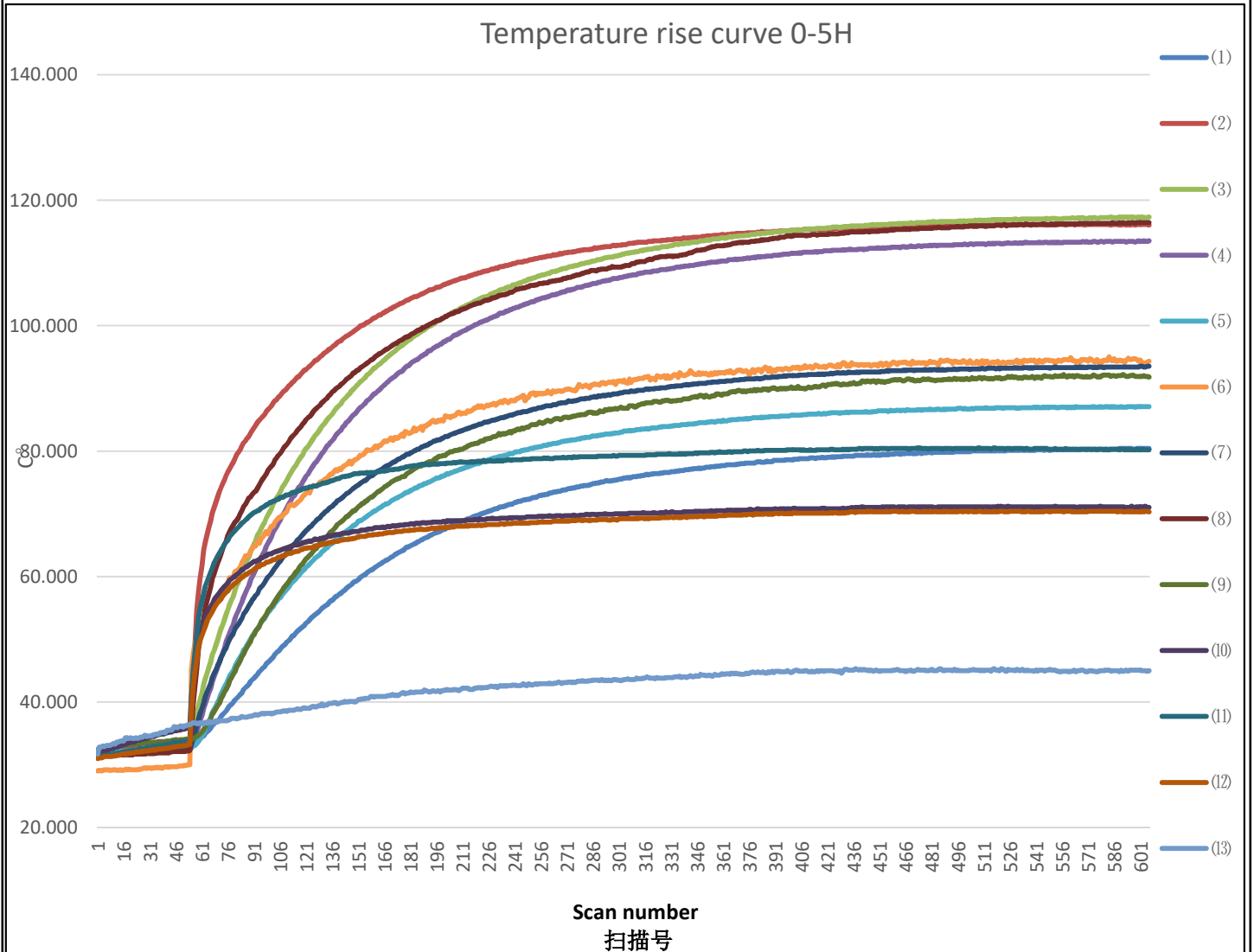
Test Date: 2021.6.8

review

复审:

mo fu mei

Bar chart 、 Temperature rise curve 条形图与温升曲线

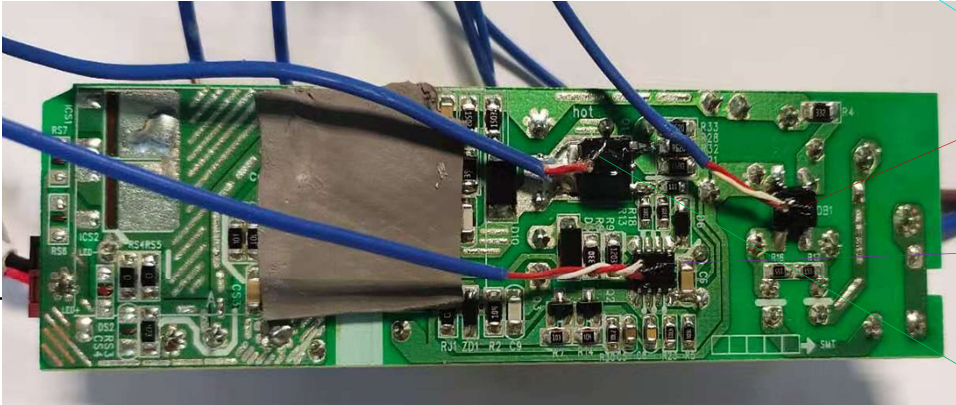
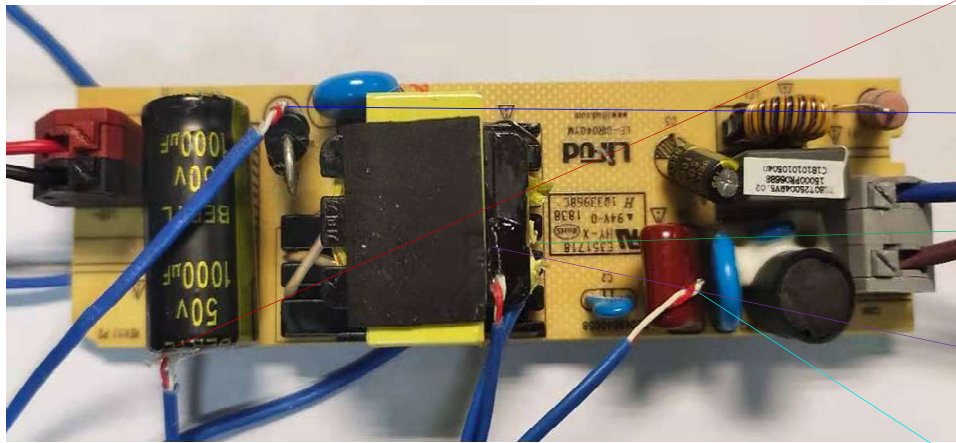


Ambient temperature: 45.025 °C
 Humidity: 60%
 Test equipment: Agilent 34970-A

Test Engineer: yang gui y
 Test Date: 2021. 6. 8
 review
 复审: mo fu mei

Confirm
 审核: mo fu mei

Reference diagram 参考图:



(1)	Electrolytic capacitor 电解电容-CE2	80.197
(2)	diode 二极管-DS1	116.07
(3)	Transformer-Coil 变压器-线圈	117.05
(4)	Transformer-core 变压器-磁芯	113.25
(5)	CBB capacitor CBB电容	86.961
(6)	Rectifier bridge 整流桥-DB1	94.351
(7)	IC IC-U1	93.3
(8)	FAMOS MOS管-Q1	116.16
(9)	TC TC点	91.843
(10)	negative abode 灯珠焊脚-	71.101
(11)	negative abode 灯珠焊脚-	80.344
(12)	negative abode 灯珠焊脚-	70.37
(13)	Ambient temperature 环境温度	45.025

Ambient temperature: 45.025 °C

Humidity: 60%

Test equipment: Agilent 34970-A

Confirm

审核:

mo fu mei

Test Engineer: yang gui y

Test Date: 2021.6.8

review

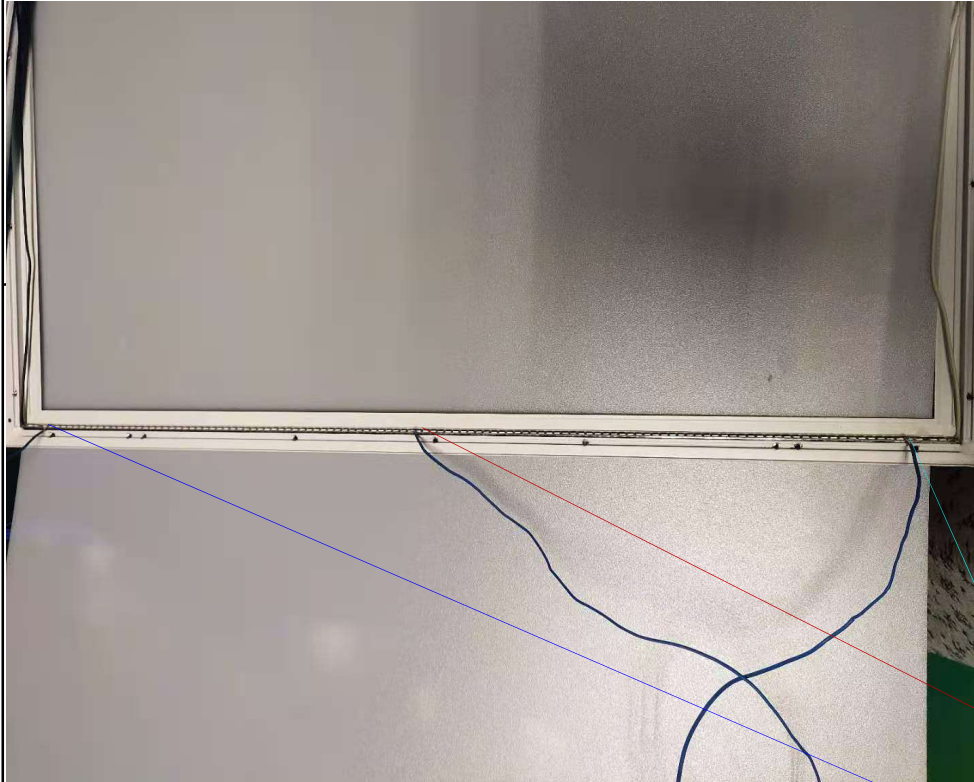
复审:

mo fu mei

Reference diagram 参考图:



图位3 9.5*14



(1)	Electrolytic capacitor 电解电容-CE2	80.197
(2)	diode 二极管-DS1	116.07
(3)	Transformer-Coil 变压器-线圈	117.05
(4)	Transformer-core 变压器-磁芯	113.25
(5)	CBB capacitor CBB电容	86.961
(6)	Rectifier bridge 整流桥-DB1	94.351
(7)	IC IC-U1	93.3
(8)	FAMOS MOS管-Q1	116.16
(9)	TC TC点	91.843
(10)	negative abode 灯珠焊脚-	71.101
(11)	negative abode 灯珠焊脚-	80.344
(12)	negative abode 灯珠焊脚-	70.37
(13)	Ambient temperature 环境温度	45.025

Ambient temperature: 45.025 °C
 Humidity: 60%
 Test equipment: Agilent 34970-A

Confirm
审核: mo fu mei

Test Engineer: yang gui y
 Test Date: 2021.6.8
 review
 复审: mo fu mei