

SDL02 LED Downlight

SDL02-008/018/030-R90AXXB-27/30/40/50K-01



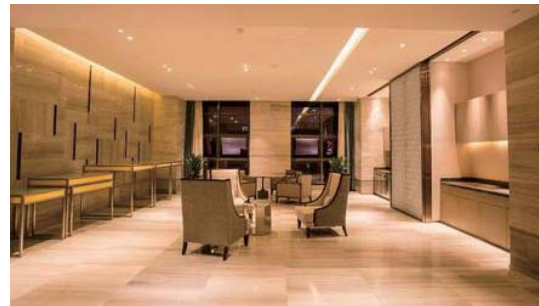
Features

- The lamp housing is made of high quality Aluminium Alloy material which is treated with advanced static electricity spray process.
- The lamp offer multiple size: 3inch,4inch,5inch, And offer 3 different reflection cap: black, white, silver, suitable for all kinds of decoration styles.
- Reliable COB light source, No UV, no infrared radiation
- External driver make sure low heat, good performance with long lifetime. Also easy for replacement.
- >25degrees Anti-glare design, you can feel the gentle lighting but not the lamps when cross the ceiling, get a excellent environment experience.
- 3years warranty

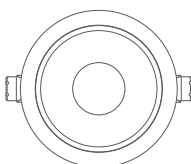
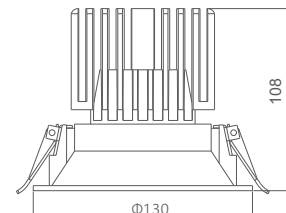
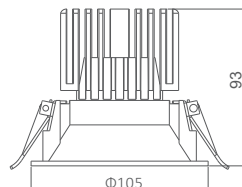
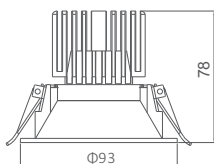


Application

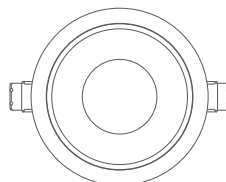
- The product is suitable for atmosphere and accent lighting in guest rooms, villas, display cabinets, artworks and places with size restrictions.



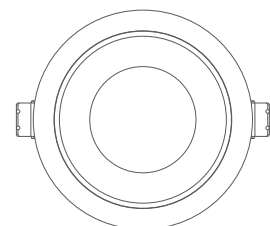
Dimensions (unit: mm)



size:Φ93*H78
cut out:Φ85



size:Φ105*H93
cut out:Φ95



size:Φ130*H108
cut out:Φ120

Accessories



Black light control cup



Silver light control cup



White light control cup

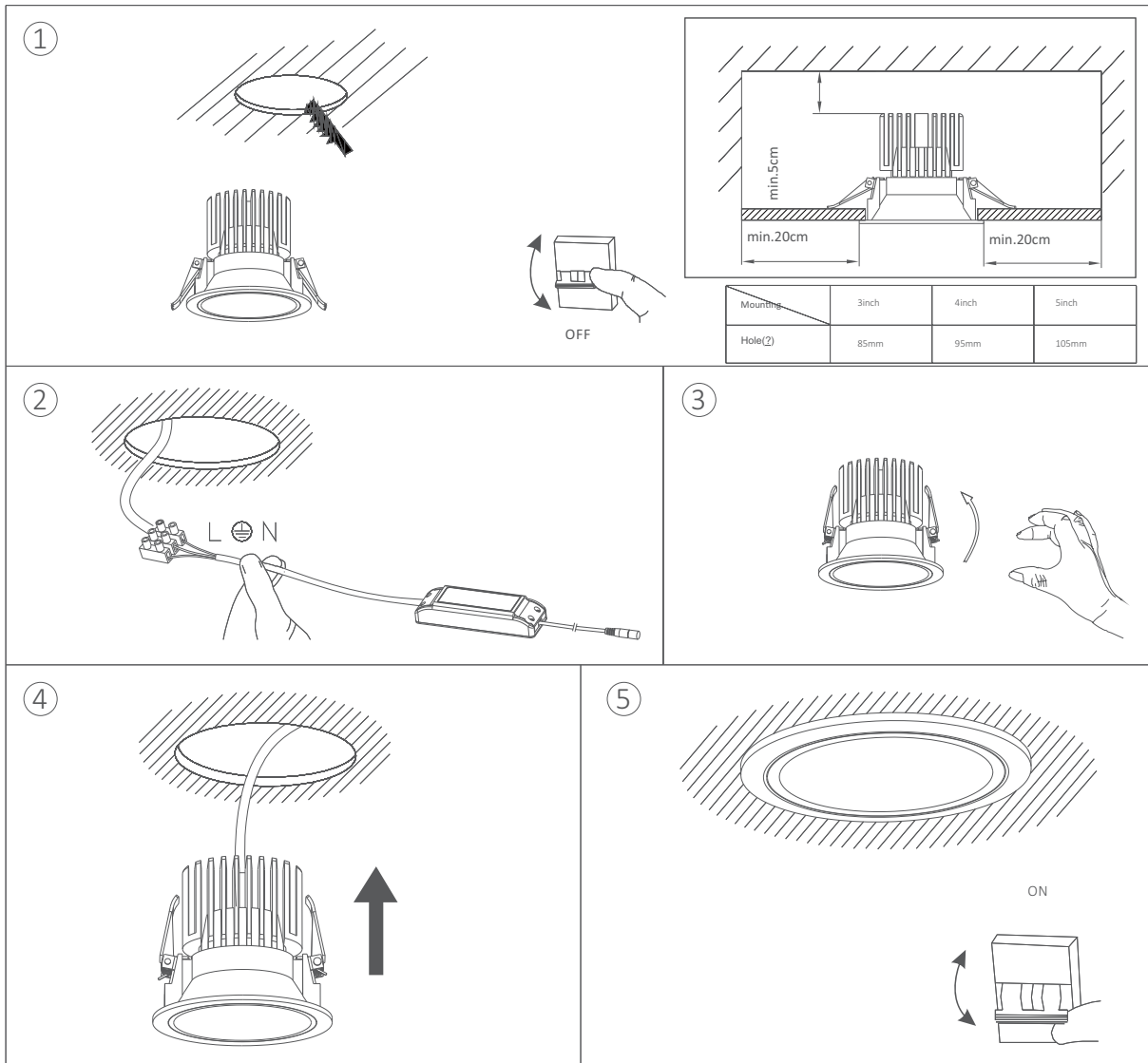
Technical parameters

Model	Color	CCT	Lumen (lm ± 10%)	Beam angle (°)	LED Type	Power (W)	Volatge (V)	Max.Current (A)	Frequency (Hz)	CRI	PF
SDL02-008-R90AXXB-50K-01	W	4700K-5300K	750lm	20°/24°/36°	COB	8W	220-240V AC	0.04	50/60Hz	>90	≥0.85
SDL02-008-R90AXXB-40K-01	NW	3800K-4200K	750lm								
SDL02-008-R90AXXB-30K-01	WW	2800K-3200K	650lm								
SDL02-008-R90AXXB-27K-01	WW	2600K-2800K	650lm								
SDL02-018-R90AXXB-50K-01	W	4700K-5300K	1700lm	20°/24°/36°	COB	18W	220-240V AC	0.09	50/60Hz	>90	≥0.85
SDL02-018-R90AXXB-40K-01	NW	3800K-4200K	1700lm								
SDL02-018-R90AXXB-30K-01	WW	2800K-3200K	1650lm								
SDL02-018-R90AXXB-27K-01	WW	2600K-2800K	1650lm								
SDL02-030-R90AXXB-50K-01	W	4700K-5300K	2850lm	20°/24°/36°	COB	30W	220-240V AC	0.15	50/60Hz	>90	≥0.85
SDL02-030-R90AXXB-40K-01	NW	3800K-4200K	2850lm								
SDL02-030-R90AXXB-30K-01	WW	2800K-3200K	2800lm								
SDL02-030-R90AXXB-27K-01	WW	2600K-2800K	2800lm								

Drawing



Installation drawing



Packaging information

Model	Inner box dimension	Carton box dimension	Unit net weight	Packing qty.	Carton box gross weight
SDL02-008	125*125*140mm	515*390*440mm	0.34KG	36PCS	16Kg
SDL02-018	135*135*155mm	555*425*485mm	0.47KG	36PCS	20.8Kg
SDL02-030	160*160*165mm	495*495*515mm	0.72KG	27PCS	23Kg

Notice



- Please read the product specification carefully first to confirm that the use environment is in line with the condition on the specification before it is used.
- Please confirm the applicable power supply before use.
- When the product is connected with power supply, ensure that the switch is at the disconnected state to prevent electric shock.
- Operation against the rules may destroy your articles, or even endanger your personal safety.
- Make preliminary calculation for the quantity of light and then calculate the total power according to frequency of single light. Design the power distribution scheme.
- Dangerous high voltage. Non professional personnel should not repair.
- If the external wire of the light is damaged, it should be replaced by manufacturer or service agent or personnel with similar qualification to avoid danger.
- Common sense for handling: avoid impact or press the product with heavy objects. Handle with care during the transportation and installation process.



Yijia Industrial Park, Fuqian Road, Guanlan Town, Longhua, Shenzhen, Guangdong, China

Tel:+86-755-27608650
Fax:+86-755-27608651
www.signcomplex.com
sales@signcomplex.com