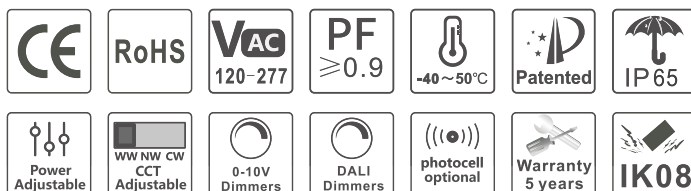
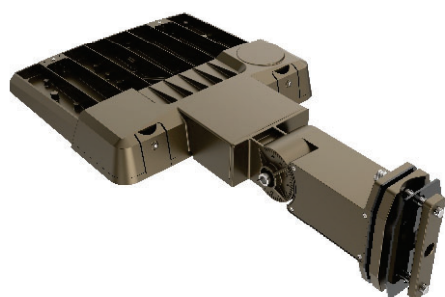
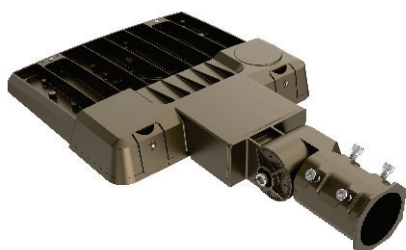




Polaris II Series Area Light UL Type

ALPII-XXX-AW-XXK-ZYYY



Description:

The Polaris II LED Area lights adopts innovative design, Terminal reserved in the fixture and mounting bracket making the installation process faster and easier. Wattage & CCT can be easily adjusted in field through built-in DIP switch. Ideal for outdoor applications such as exterior building lighting, roadways, loading docks, or parking areas.

Features:

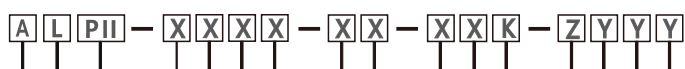
1. Plug & Play design, Let us do the wiring --- no need to struggle with wiring schematics.
2. Buckle design, toolless to open the driver box, easy to maintain and replace the driver.
3. Universal bracket, Slipfitter, Wall & Pole mount all in one bracket.
4. Power & CCT adjustable.
5. The lens can be replaced by hand.
6. 5 years warranty



Technical parameters:

Modle	CCT	Lumen(lm) (±10%)	Power (±10%)	LEDs type CRI	Beam (angle°)	Voltage Frequency	Notes
ALPII-100-AW-50K-D3YY	4700-5300K	13000	100W	SMD: 2835/3030 Ra≥80	P40:105X65° T3M:160X60°	AW:120-277VAC 50-60Hz,Max1.2A	130Lm/W
ALPII-100-AW-40K-D3YY	3700-4300K	12800					
ALPII-100-AW-30K-D3YY	2700-3200K	12000					
ALPII-150-AW-50K-D3YY	4700-5300K	19500	150W	SMD: 2835/3030 Ra≥80	P40:105X65° T3M:160X60°	AW:120-277VAC 50-60Hz,Max1.8A	130Lm/W
ALPII-150-AW-40K-D3YY	3700-4300K	19200					
ALPII-150-AW-30K-D3YY	2700-3200K	18000					
ALPII-230-AW-50K-D3YY	4700-5300K	29900	230W	SMD: 2835/3030 Ra≥80	P40:105X65° T3M:160X60°	AW:120-277VAC 50-60Hz,Max2.6A	130Lm/W
ALPII-230-AW-40K-D3YY	3700-4300K	29440					
ALPII-230-AW-30K-D3YY	2700-3200K	27600					
ALPII-300-AW-50K-D3YY	4700-5300K	39000	300W	SMD: 2835/3030 Ra≥80	P40:105X65° T3M:160X60°	AW:120-277VAC 50-60Hz,Max3.5A	130Lm/W
ALPII-300-AW-40K-D3YY	3700-4300K	38400					
ALPII-300-AW-30K-D3YY	2700-3200K	36000					
ALPII-100-AW-50K-D6YY	4700-5300K	16000	100W	SMD: 2835/3030 Ra≥80	P40:105X65° T3M:160X60°	AW:120-277VAC 50-60Hz,Max1.2A	160Lm/W
ALPII-100-AW-40K-D6YY	3700-4300K	15800					
ALPII-100-AW-30K-D6YY	2700-3200K	15000					
ALPII-150-AW-50K-D6YY	4700-5300K	24000	150W	SMD: 2835/3030 Ra≥80	P40:105X65° T3M:160X60°	AW:120-277VAC 50-60Hz,Max1.8A	160Lm/W
ALPII-150-AW-40K-D6YY	3700-4300K	23700					
ALPII-150-AW-30K-D6YY	2700-3200K	22500					
ALPII-230-AW-50K-D6YY	4700-5300K	36800	230W	SMD: 2835/3030 Ra≥80	P40:105X65° T3M:160X60°	AW:120-277VAC 50-60Hz,Max2.6A	160Lm/W
ALPII-230-AW-40K-D6YY	3700-4300K	36340					
ALPII-230-AW-30K-D6YY	2700-3200K	34500					
ALPII-300-AW-50K-D6YY	4700-5300K	48000	300W	SMD: 2835/3030 Ra≥80	P40:105X65° T3M:160X60°	AW:120-277VAC 50-60Hz,Max3.5A	160Lm/W
ALPII-300-AW-40K-D6YY	3700-4300K	47400					
ALPII-300-AW-30K-D6YY	2700-3200K	45000					

Coding principle



- First:D: Dimming/S:Induction/Blank:Nonfunctional
- Second:Light efficiency discrimination,3:130Lm/W(Ra80) 6:160lm/W(Ra80)
- Angle: 3/Type-3M; 4/P40;
- Fourth:Power supply type: 1.SOSEN-NH-E; 2.SOSEN-NL-E;3.Lifud;
- Color Temperature:50(4700-5300K)/40(3800-4200K)/30(2700-3200K)/
- TC:T(Tunable);C(CCT: 30K-40K-50K)
- K: Units
- Voltage: AH:220-240VAC/AW:120-277VAC
- Power: 100/150/230/300
- Power Tunable: T100/T150/T230/T300
- AL:Area light
- PII:Polaris II Serie

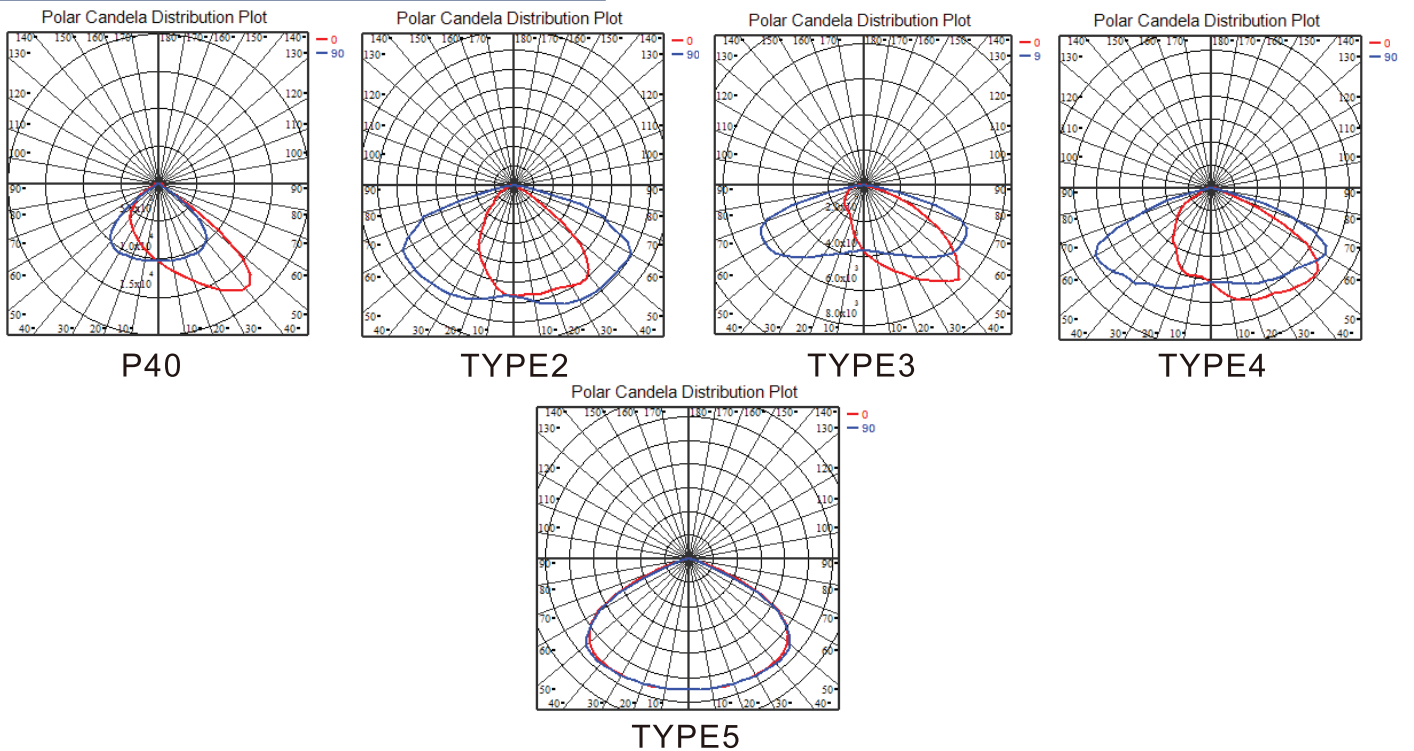


Application:

Polaris II Area lights can be used in parking lot, small stadium, plaza, alley, park, farm, gas station, community, roadway and other outdoor location



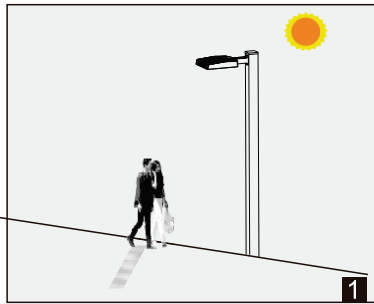
Intensity distribution diagram:



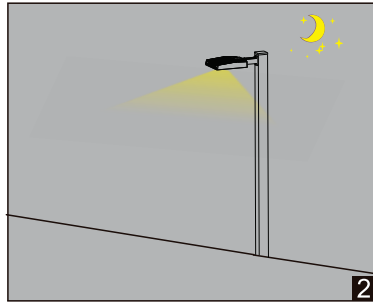


Features of Polaris Series Area Light with Motion Sensor

The Area light with Motion Sensor adopt the latest 5.8 GHz microwave sensor, according to Doppler principle, it transmit and receive high-frequency microwave signal to detect moving object, and the detecting signal can penetrate plastic, glass, wood panel and other thin non-metallic objects. Photocell of Internally integrated can distinguish sun light and LED light, when detect ambient brightness, it won't be affected by LED light. The product combine 1-10V dimming power supply, it can automatically control switch and adjust brightness according to brightness of natural light, surrounding pedestrian or other moving objects.



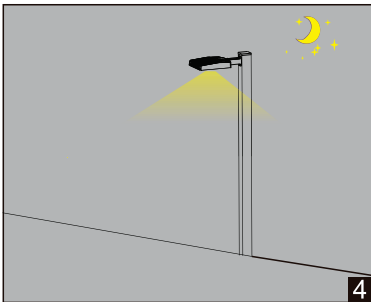
When brightness of natural light is higher than 50Lux, the lamp is off, even there is pedestrian or other moving objects, the lamp will not switch on.



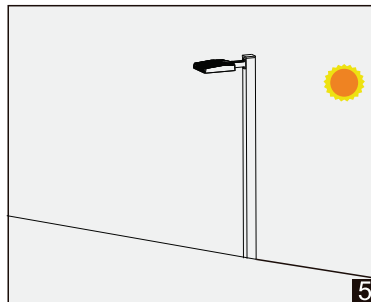
When brightness of natural light is lower than 50Lux, 1 minute later, the lamp will be on 30%, and the moving sensor function start.



After moving sensor function start, if there is moving object around, the brightness of lamp be will be from 30% to 100%, and than keep 5 minutes.



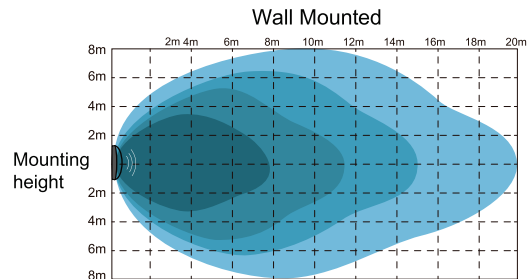
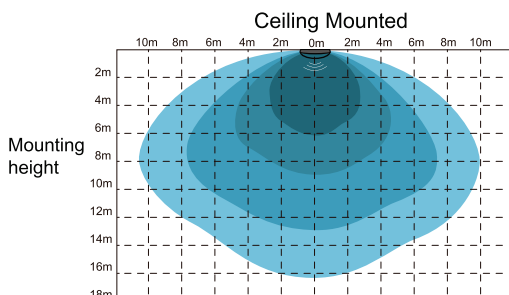
If there is no moving objects, 5 minutes later, the lamp recover 30% brightness.



When brightness of natural light is higher than 100Lux, 1minutes later the lamp will be off and disable motion sensor function.

»»» Detection coverage

Sensitivity : 25% 50% 75% 100%



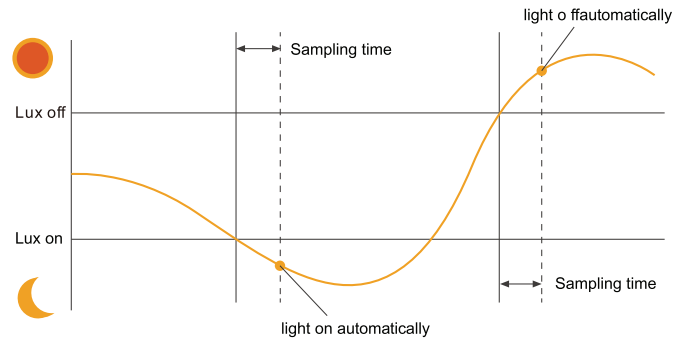


»» Daylight Priority

difference between natural light and artificial LED light, the sensor will turn on your light fixtures when the ambient light is lower than the setting lux value even there is no any motion was detected. When the ambient light is higher than the setting lux value, the sensor will switch off the light fixtures even there is still motion.

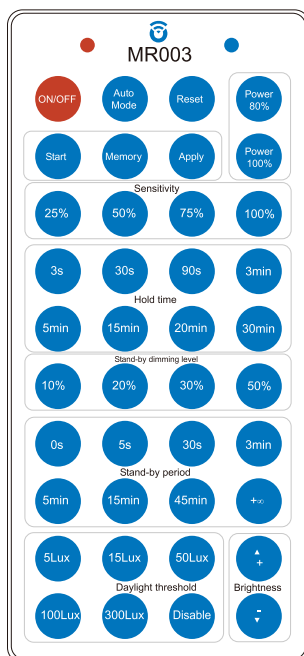
Lux-Off sampling time--10s ;

Lux-On function takes effect only when standby dimming period set at +8.



Brief introduction of remote controller

Above functions are defaults of our products, if product functions and parameters need to be revised, the remote controller Mr003 need to be purchased, and the remote controller need to be bought separately.



Size(L*W*H):116.5*55*13mm

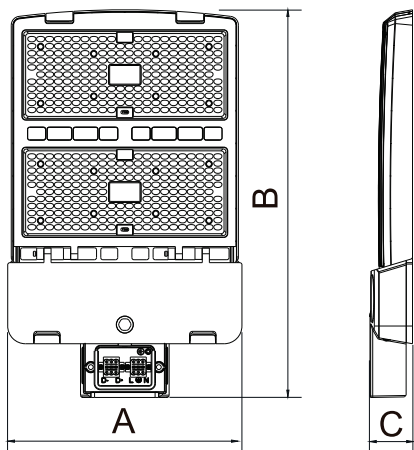
7 battery is recommended

Key		Function
ON/OFF		Setting the light permanent ON or OFF without motion mode
Auto		Switch to sensor mode and restore the latest sensor setting
Reset		Turn the sensor in a default setting (3s hold time, 0s stand-by period, lux disable, 100% sensitivity).
Power (80%/100%)		Quick setting the power output in 80% or 100%
Brightness (+/-)		Long press this button to set the power from 20% to 100% ,available in permanent ON mode or in sensor mode.
Start	Program Mode	1. Press Start to program mode , then select the ①Sensitivity② Holdtime③Standby dimming level④Standby period⑤Daylight threshold to setting 2. Press Memory to save the parameters ①-⑤ had selected in step 1 3. Press Apply to transmit the ①-⑤ parameters to the target sensor Remark : After press Start you need to press any of ①-⑤ parameter button within 30S, the time window between press any button is 30S , it will quit program mode if no any button is pressed within 30S.
Memory	Save Setting	
Apply	One Key Apply	
Sensitivity		In this area, movement will be detected and able to trigger the sensor. 100% detection area is also known as the strongest sensitivity.
Hold time		The period of light keeping 100% brightness after moving objects leave the detection area.
Stand-by dimming level		The dimming level in the standby period.
Stand-by period		The period of light keeping low output before it's completely switched off. When it's preset as "+%", the light always keep at low output if no movement in the detection area and doesn't turn off.
Daylight threshold		Definition of the ambient brightness; only when the ambient brightness is lower than the preset specific lux amount, the sensor will work; when it's preset as "disable", the sensor will detects motion regardless the ambient brightness.

Remote Setting Tips: When press any button, if the light is flickering one time, means the setting is successful.

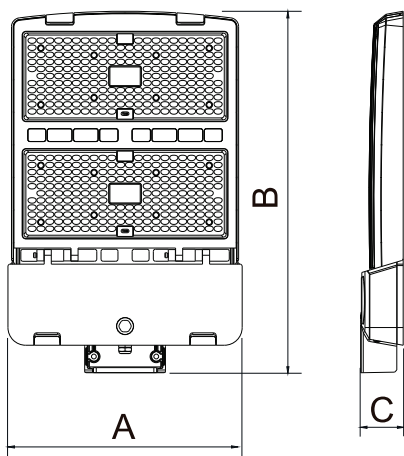


Dimension (Unit:mm/inch):



TYPE	A	B	C
100W	330/12.99"	381/15.00"	60/2.36"
150W	330/12.99"	381/15.00"	60/2.36"
230W	330/12.99"	547/21.53"	60/2.36"
300W	330/12.99"	547/21.53"	60/2.36"

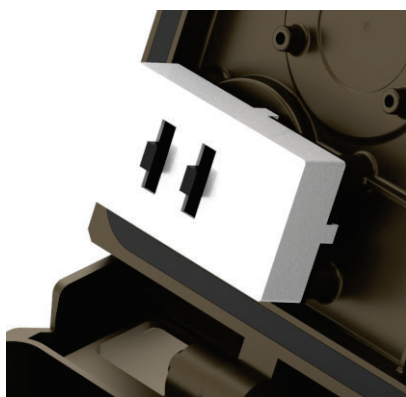
Notes:
Portable quick connect terminals



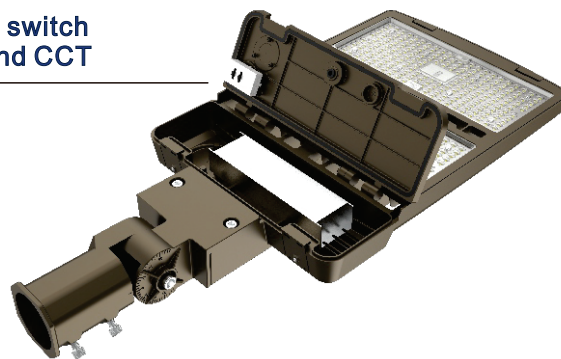
TYPE	A	B	C
100W	330/12.99"	344/13.54"	60/2.36"
150W	330/12.99"	344/13.54"	60/2.36"
230W	330/12.99"	510/20.07"	60/2.36"
300W	330/12.99"	510/20.07"	60/2.36"

Notes:
Do not carry quick connect terminals

Adjustable power and CCT:



Adjustable switch of power and CCT





Power adjustable

Switch	Location	100W	150W	230W	300W
	L	100W	150W	230W	300W
	M	75W	120W	200W	275W
	S	60W	100W	175W	250W

Parts specification:



295-09-4021-006

External Tenon Reducer for Round Poles



295-09-4021-005

Internal Tenon Adaptor For Square Poles



295-09-4021-001

Square Pole Mounting



295-09-4021-003

Square to Round pole-2 heads



295-09-4021-002

Wall Mounting

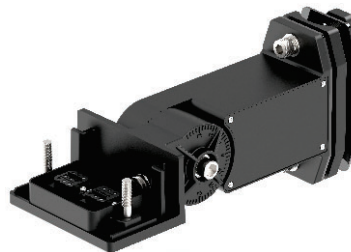


295-09-4021-004

Square to Round pole-2 heads



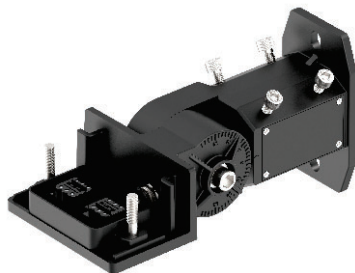
Slip Fitter A



Straight arm bracket C



Trunnion bracket



Slip Fitter B



AC photoreceptor

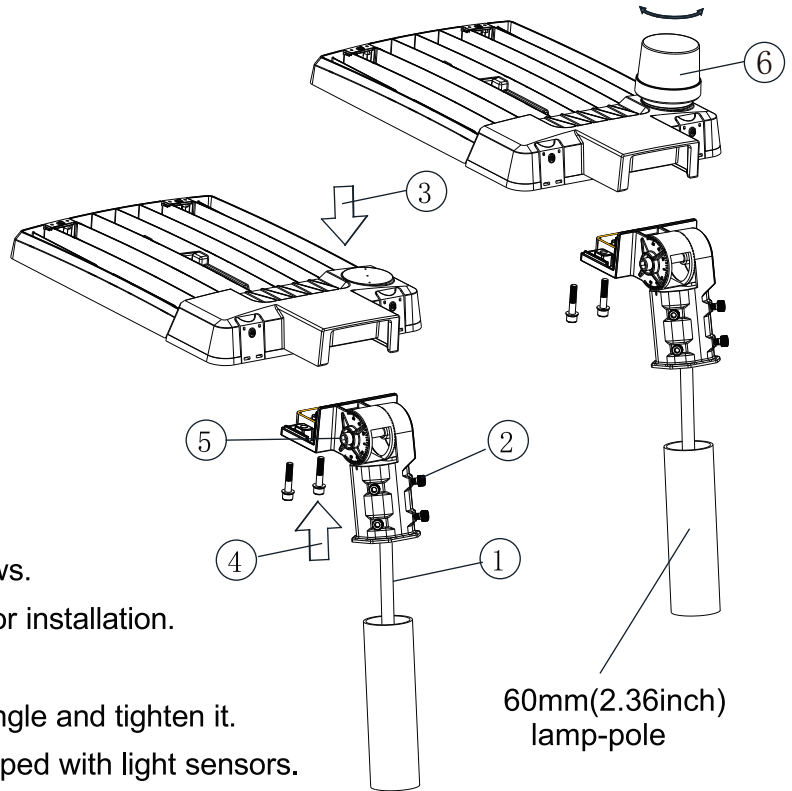
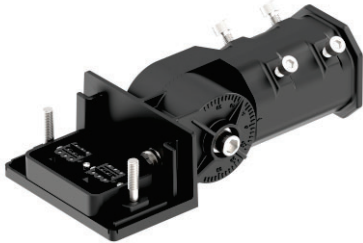


Microwave sensor



Installation:

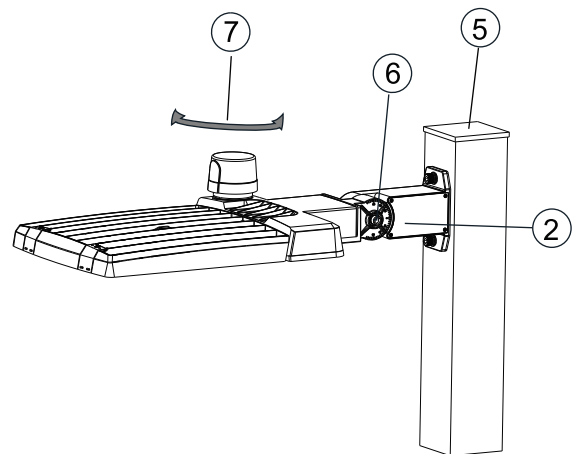
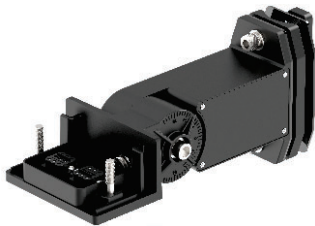
Slip Fitter A



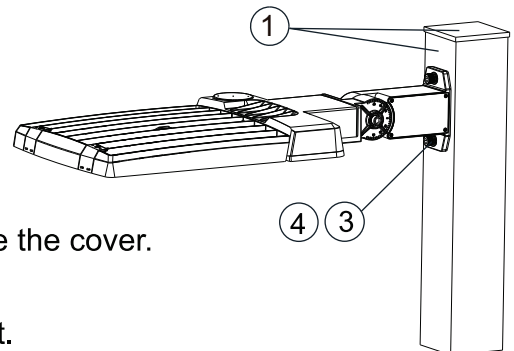
- 1.Slip Fitter A wire and pole wire connection.
- 2.Slip Fitter A is fixed to the lamp pole by screws.
- 3.Align the lamp downwards with the bracket for installation.
- 4.Fixing lamps with screws.
- 5.Loosen the screws to adjust the irradiation angle and tighten it.
- 6.Lamps with light sensing bases can be equipped with light sensors.

Straight arm bracket C

100-150mm(3.94-5.91inch) square pole

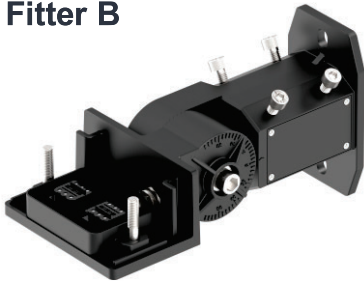


1. Confirm the hole position of the installation position and Open the lamp pole cover.
2. Open the cover of bracket C.
3. Thread the screw through the lamp bracket C and the through hole on the lamp pole and secure it tightly.
4. Connect the exposed wires to the power cord and secure the cover.
5. Close the lamp pole cover.
- 6.Loosen the bolt to adjust the angle and tightening the bolt.
- 7.Lamps with light sensing bases can be equipped with light sensors.

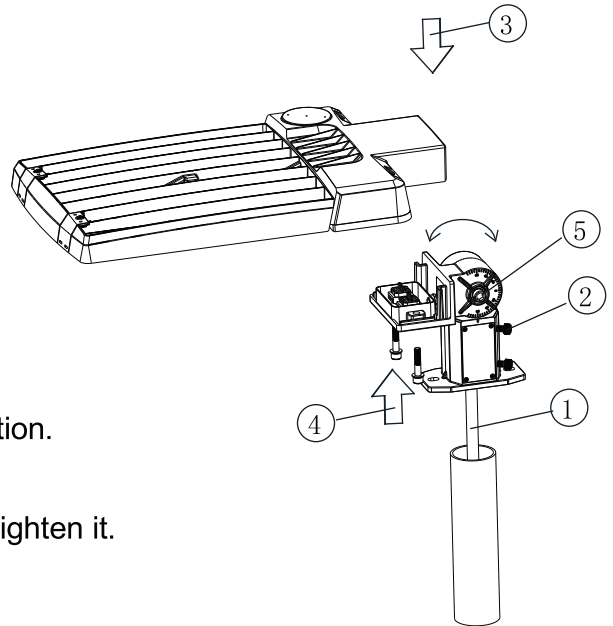




Slip Fitter B

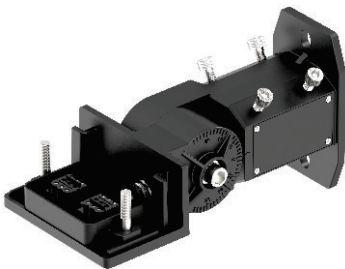


- 1.Slip Fitter B wire and pole wire connection.
- 2.Slip Fitter B is fixed to the lamp pole by screws.
- 3.Align the lamp downwards with the bracket for installation.
- 4.Fixing lamps with screws.
- 5.Loosen the screws to adjust the irradiation angle and tighten it.

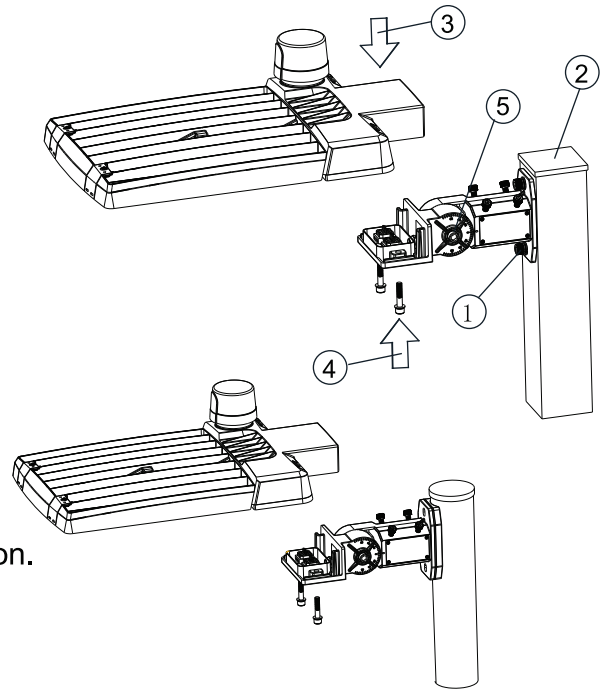


100-150mm(3.94-5.91inch) square pole section

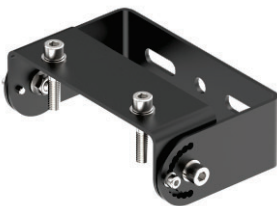
60/70mm(2.36-2.75inch) round pole section



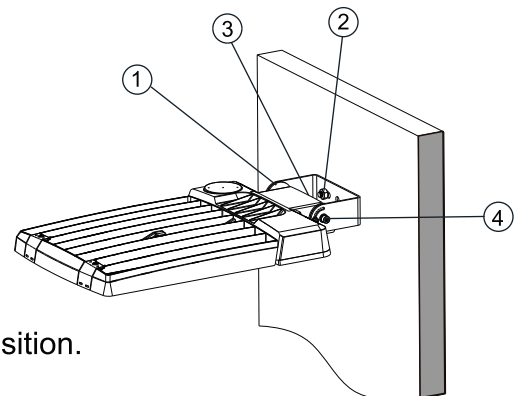
- 1.Find the corresponding hole position of the lamp post.
- 2.Open the cover,secure Slip Fitter B to the lamp post, connect the cable and close the cover.
- 3.Align the lamp downwards with the bracket for installation.
- 4.Fixing lamps with screws.
- 5.Loosen the screws to adjust the irradiation angle and tighten it.



Trunnion bracket

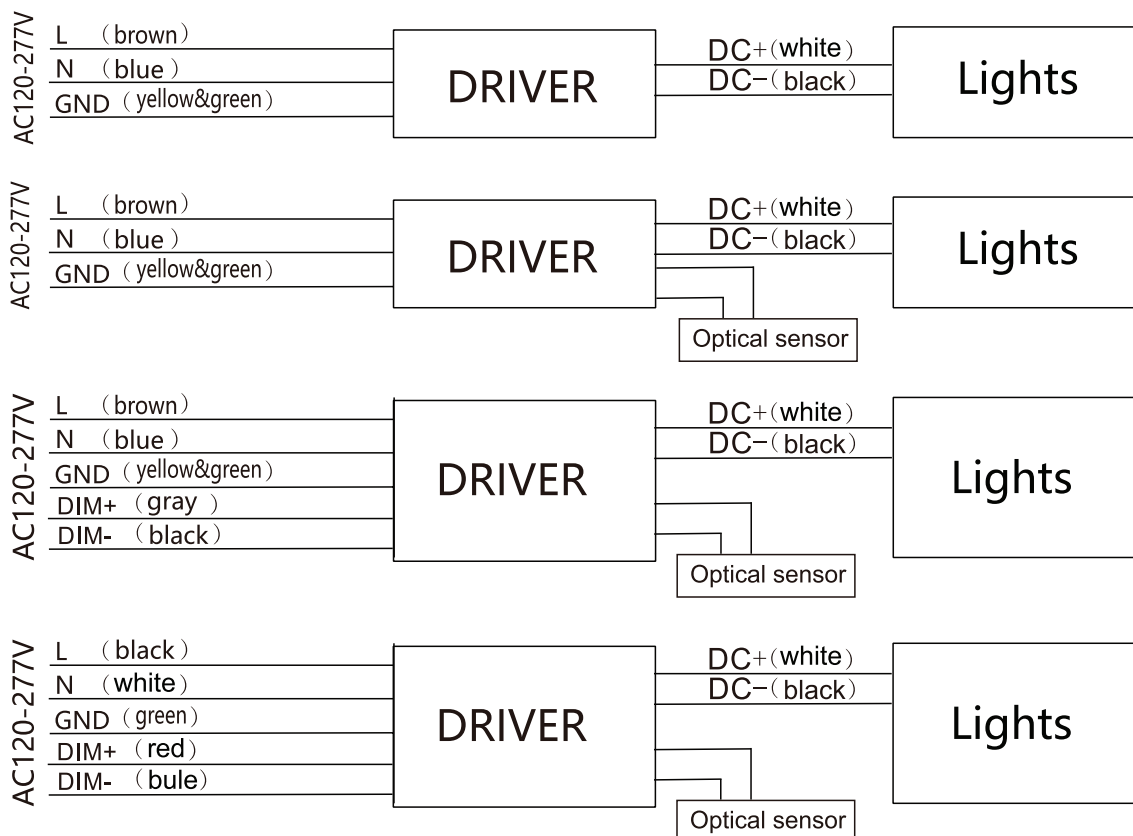


- 1.Fix the screw through the trunnion bracket to the lamp.
- 2.Bolt through the bracket to fix the lamp to the installation position.
- 3.Connect exposed lamp wire to power wire;
- 4.Adjust the lighting angle and fix it reliably(adjust angle: -90° – 90°).





Wiring diagram:



Packing information:

Regular installation

Ltem No.	Cartons(mm)	Quantiy	N.W (KG)	G.W (KG)
ALPII-100-AW-XXK-ZYYY	463X412X145	1PCS	2.8KG	3.6kg
ALPII-150-AW-XXK-ZYYY	463X412X145	1PCS	2.8KG	3.6kg
ALPII-230-AW-XXK-ZYYY	629X412X145	1PCS	4.2KG	5.2kg
ALPII-300-AW-XXK-ZYYY	629X412X145	1PCS	4.2KG	5.2kg

Convenient solution installation

Ltem No.	Cartons(mm)	Quantiy	N.W (KG)	G.W (KG)
ALPII-100-AW-XXK-ZYYY	643X412X145	1PCS	4.3KG	5.2kg
ALPII-150-AW-XXK-ZYYY	643X412X145	1PCS	4.3KG	5.2kg
ALPII-230-AW-XXK-ZYYY	809X412X145	1PCS	5.7KG	6.8kg
ALPII-300-AW-XXK-ZYYY	809X412X145	1PCS	5.7KG	6.8kg



Installation requirement:

1. Power off before installation; and the lamp must be installed by professional electrician;
2. Confirm installation hole and location;
3. Connect light wire to power wire, seal the joint with insulation;
4. Make sure the installation material can endure the lamp weight; and install the lamp in the operation location.
5. The installation height should avoid being easily touched.

! Notice:

1. Please first read the product specification carefully to make sure the using environment conform to specification, then it can be installation;
2. Please confirm input voltage, frequency before installation;
3. This product must be installed by electrician;
4. If there is any damage to the power wire or shell of the product, it should be taken as defective product and do not use it;
5. Dangerous high voltage, non-professionals are not allowed to maintain the product;
6. If external soft cable or soft wire of the light is damaged, it should be replaced by manufacturer or service agent or personnel with similar qualification to avoid danger.
7. Please pull the power cord to the wiring compartment at the bottom of mounting pole and make the branch connection, the input wire connected at the bottom of the pole. (the length of driver input wire meet the demand of customer's).
8. Use listed water proof bushing at outlet box cover (if applicable).
9. Cannot be installed in low-lying areas to avoid damage caused by accumulated water.
10. Light sensing and induction lamps should not have a metal shell covering their surface.
11. Light fixtures with induction should not be installed next to large machines such as fans and ceiling fans to avoid vibration that may cause incorrect triggering.