

ONE LED CUTTABLE NEON

Available colors



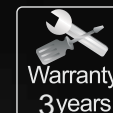
WW

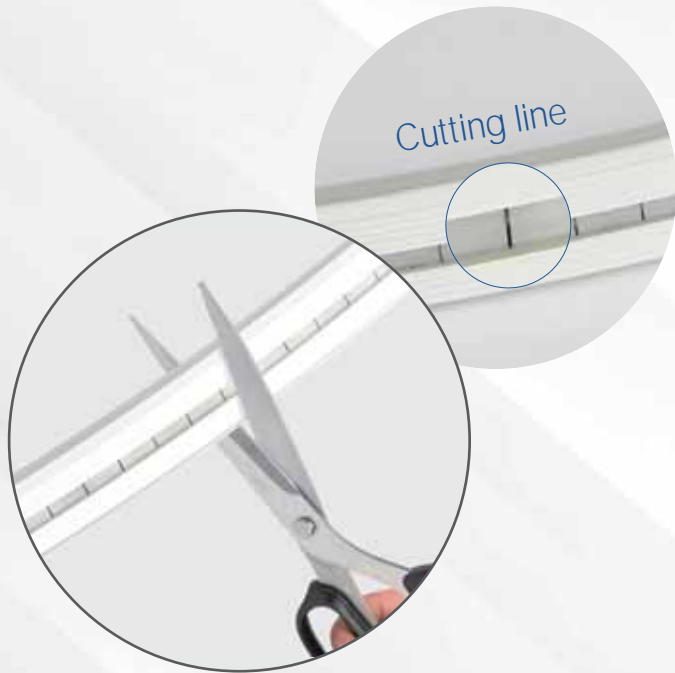


NW



W





ONE LED CUTTABLE

Optional cutting length, easy to match
a variety of mounting sizes

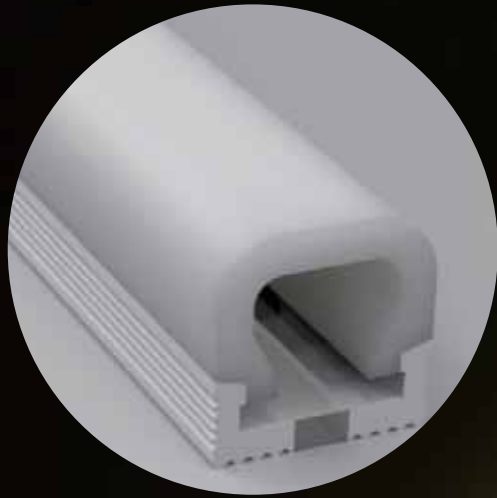


3-SIDE EMITTING

3-side luminous, large beam angle, no light dot can be seen even in close distance, soft light

GOOD FLEXIBILITY AND PLASTICITY

—
High-end vapor phase silicone, strong weather resistance, no yellowing, good softness and plasticity.





WATERPROOF AND SAFER APPLICATION

The product has passed CE, RoHS and other certifications, good waterproof effect, safer application.



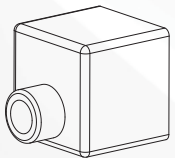
APPLICATION

Widely used in hotels, shopping malls, furniture, cabinets, bookshelves, as decorative lighting, direct lighting or indirect lighting.

PARAMETER

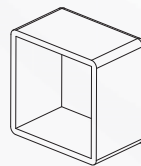
Model	LED Type	Color	LED Qty. (leds/pcs)	Lumen (lm/pcs)	Power (w/pcs)	Voltage (V)	Ra	IP
SC-1212-WW-24	2835	WW(3000K)	128	1009-1015				
SC-1212-NW-24	2835	NW(4000K)	128	1020-1025	10	12/24	80	65
SC-1212-W-24	2835	W(6000K)	128	1030-1035				

ACCESSORIES



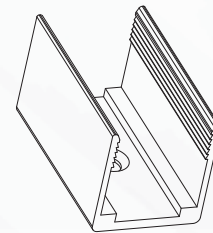
End cap with hole

2pcs/5M



End cap without hole

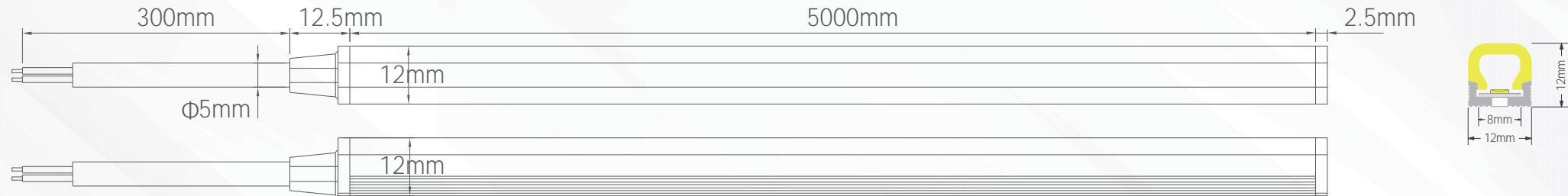
2pcs/5M



Mounting clip

20pcs/5M

DIMENSIONS (unit: mm)



INSTALLATION DIAGRAM

Installation operation

1. Fix the clip in the place where the neon flex installed, as shown in Figure 1.

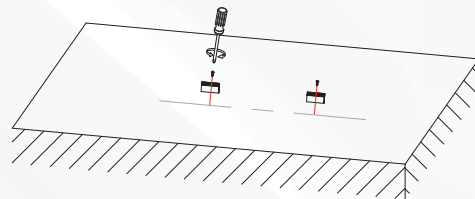


Figure 1

2. Install the neon flex into the clip, the installation is complete, as shown in Figure 2.

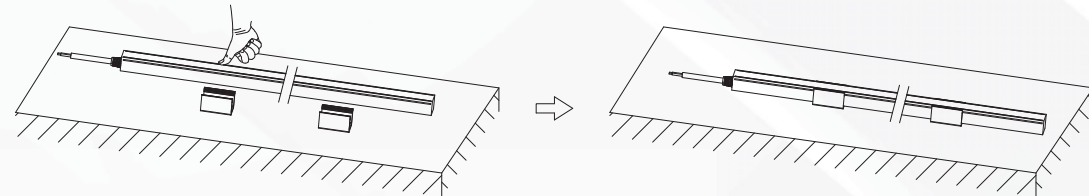
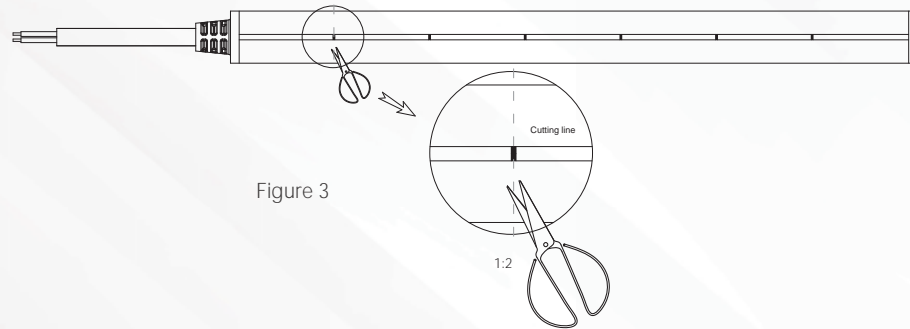


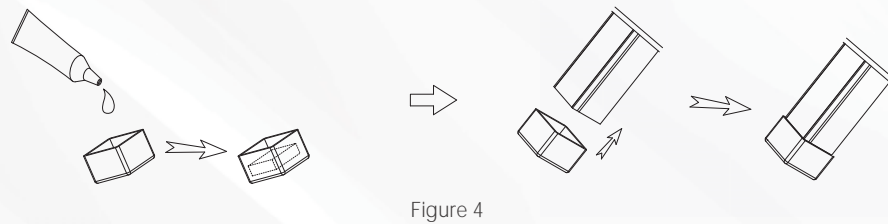
Figure 2

Installation operation

1. Cut along the cutting line with scissors, as shown in Figure 3.



2. The plug will be filled with glue, and put the neon flex into the plug, the installation is complete, as shown in Figure 4.



3. Cut off the adhesive on the back of the PCB to reveal the welding points, as shown in Figure 5.

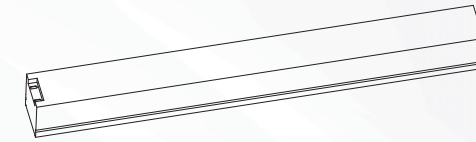


Figure 5

4. Use the soldering iron to solder the wire, as shown in Figure 6.

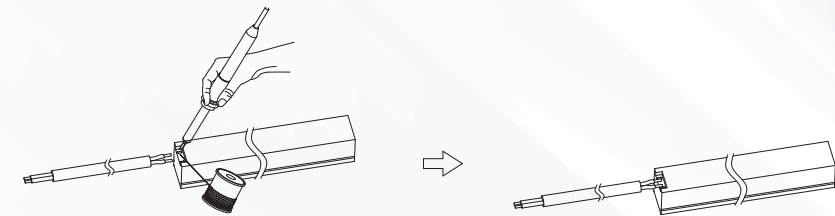


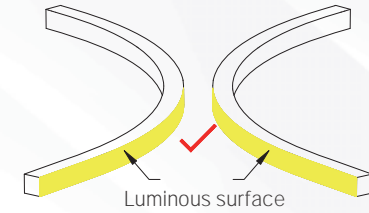
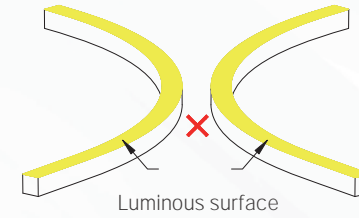
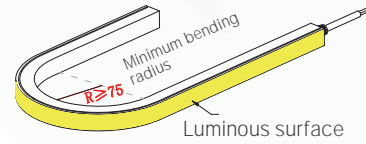
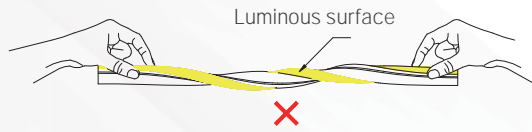
Figure 6

5. Put the plug encased into the line, and repeat Figure 4 gluing steps, and then insert the neon flex into the plug, the installation is complete, as shown in Figure 7.

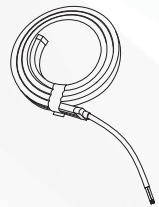


Figure 7

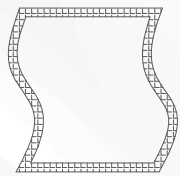
Bending direction and bending radius



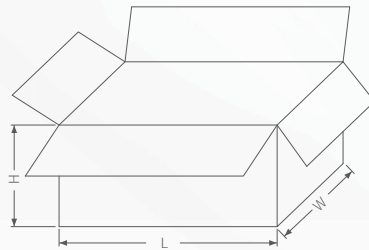
PACKAGING INFORMATION



LED strip



Anti-static bag



Packing box

Part Number	M/roll	Carton packing Qty	Carton weight	Carton size
SC-1212-WW-24				
SC-1212-NW-24	5	15	11.5KG	590*325*211mm
SC-1212-W-24				

INSTALLATION REQUIREMENT



- The LED strip and accessories can't be squeezed or folded.
- PCB conductive parts can't be damaged when installation.
- Installation must conform to electrical safety standard. The LED strip can only be installed by professionals.
- Ensure power supply transform operating load with transformer.
- When install on metal or conductor surface, insulation protection need to be provided to the contact area.
- Observe positive and negative polarity, ensure correct connection to avoid damaging LED strip.
- When installing, please prevent static electricity.
- The product need anti-corrosion environment, such as, avoiding damp, water drop or other adverse elements.