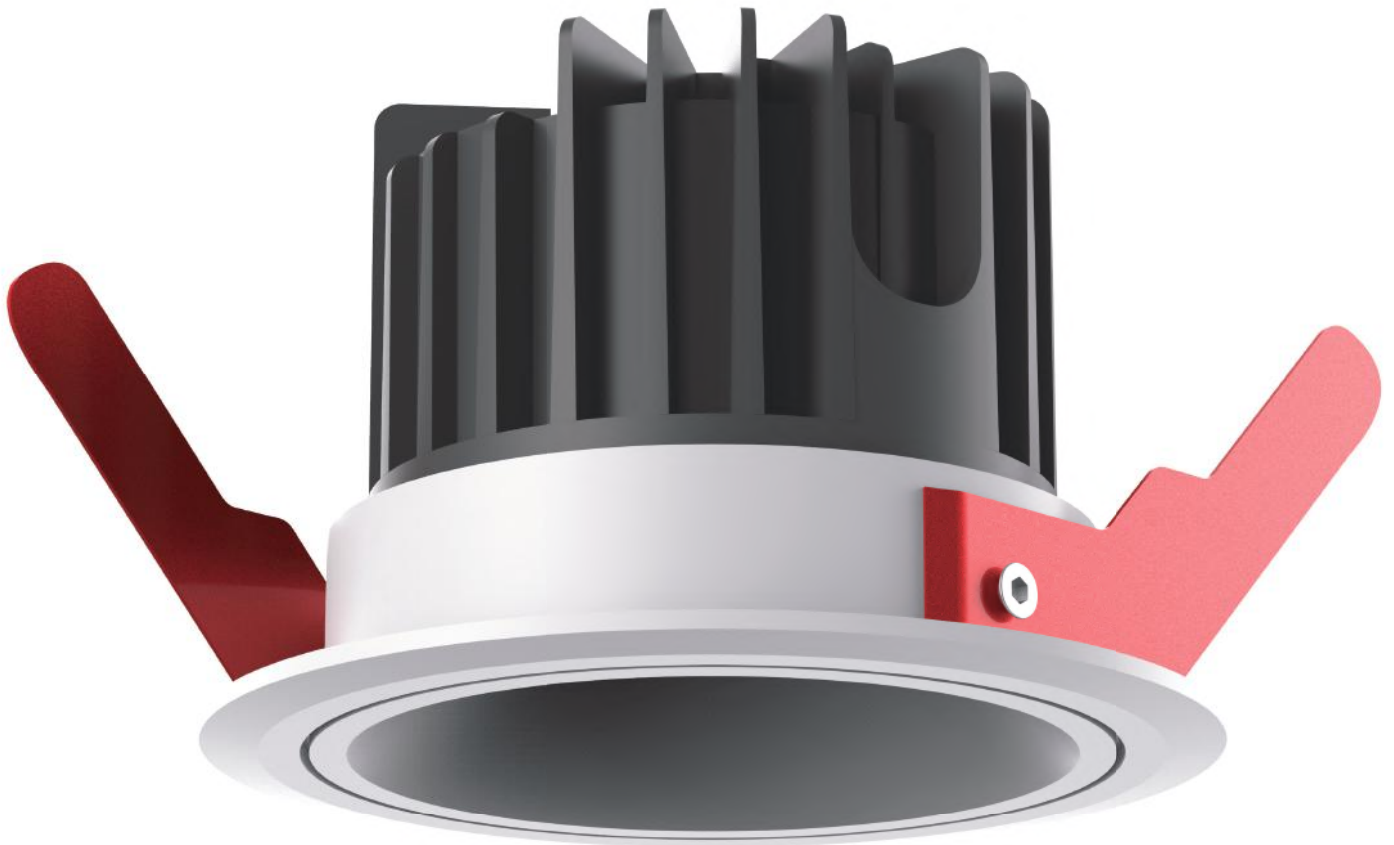


Economical ultra-thin downlight

CL103-75 / CL103-95



Features

- The main material of this product is aluminum alloy, and the main process is die-casting processing;
- The height of the product is only 29mm, ultra-thin and the surface is dusted;
- PC diffuser mask is adopted to give uniform light;
- The product heat dissipation is good, effectively ensure the long life of LED.
- Separate design of power supply and main body, which is more advantageous to ensure the life of power supply and LED.
- Energy-efficient LED drive power supply.

Application

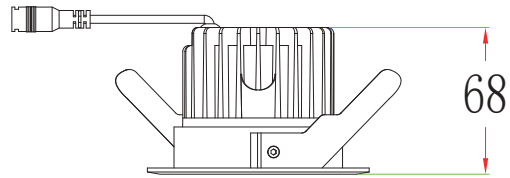
- Mainly applicable in factories, hotels, home renovation, department stores and exhibition rooms, etc.



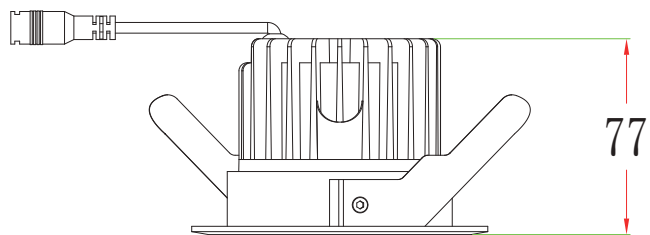
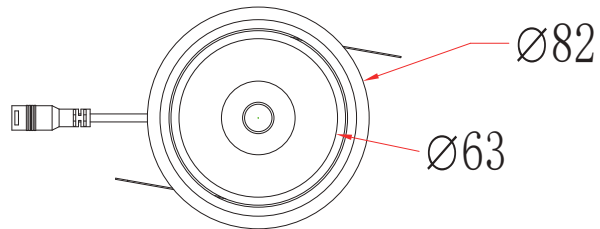
Technical parameters

Model	CCT	Lumen ($\pm 10\%$)	Power	Size	Hole size	Beam angle	LED Type	Volatge	Frequency	CRI	PF
CL103-75-7W-30K-R90-2401	3000K	554	7	$\phi 83 \times H68 \text{mm}$	$\phi 75$	24° (38°)	COB	AC220~240	50/60Hz	> 90	> 0.9
CL103-75-7W-40K-R90-2401	4000K	635									
CL103-75-7W-50K-R90-2401	5000K	624									
CL103-95-15W-30K-R90-2401	3000K	1444	15	$\phi 100 \times H77 \text{mm}$	$\phi 95$						
CL103-95-15W-40K-R90-2401	4000K	1397									
CL103-95-15W-50K-R90-2401	5000K	1559									

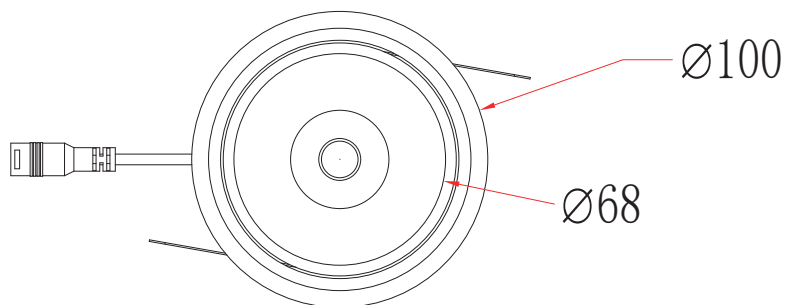
Dimensions (unit: mm)



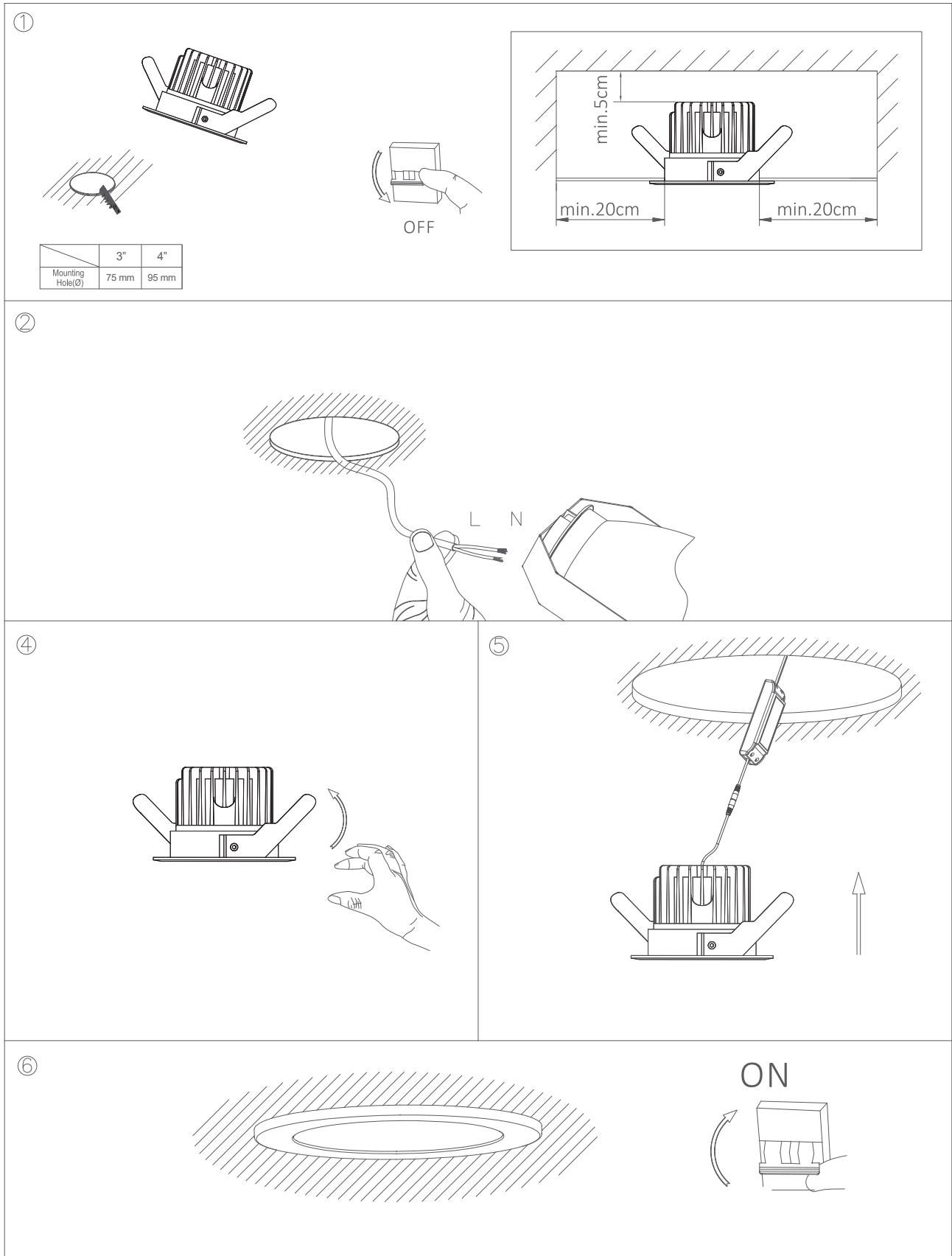
- CL103-75-7W-30K-R90-2401
- CL103-75-7W-40K-R90-2401
- CL103-75-7W-50K-R90-2401



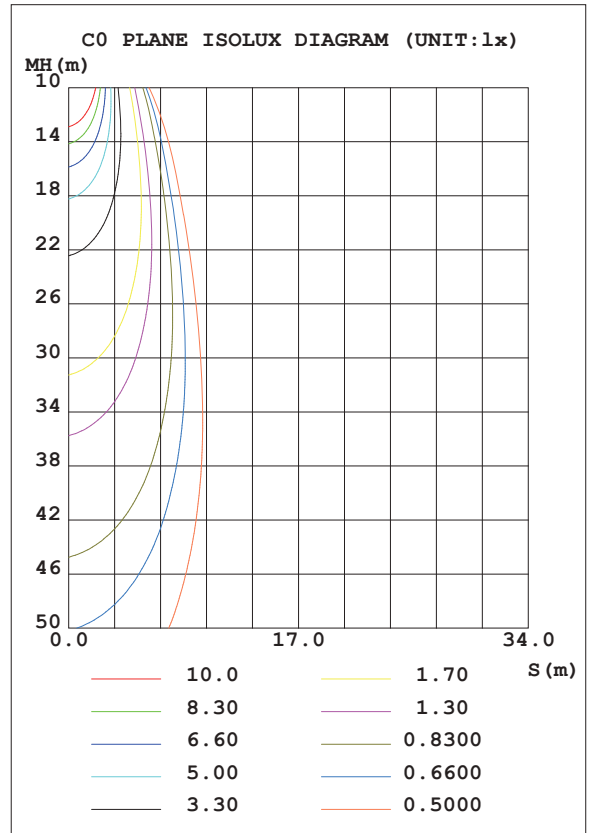
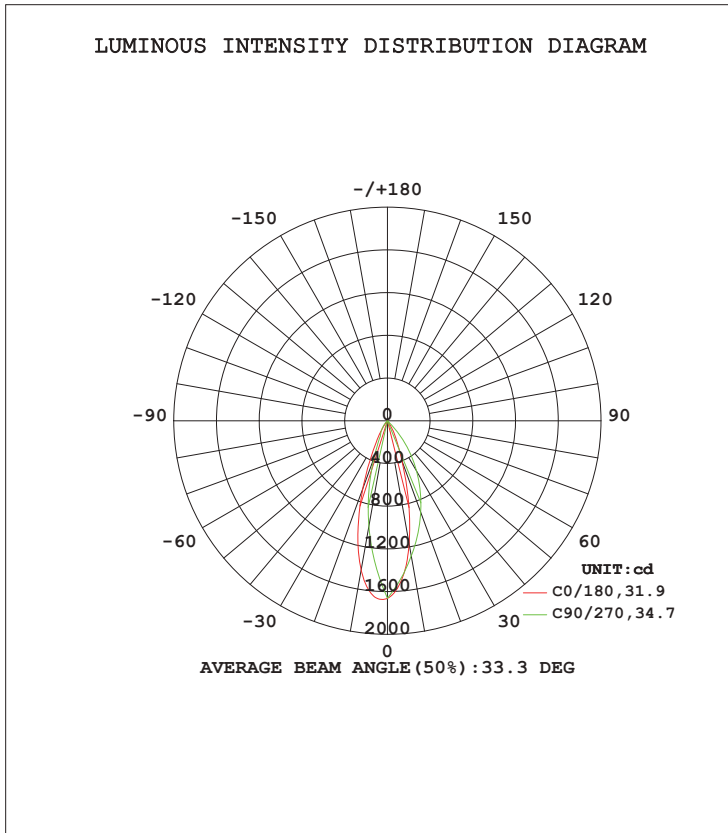
- CL103-95-15W-30K-R90-2401
- CL103-95-15W-40K-R90-2401
- CL103-95-15W-50K-R90-2401



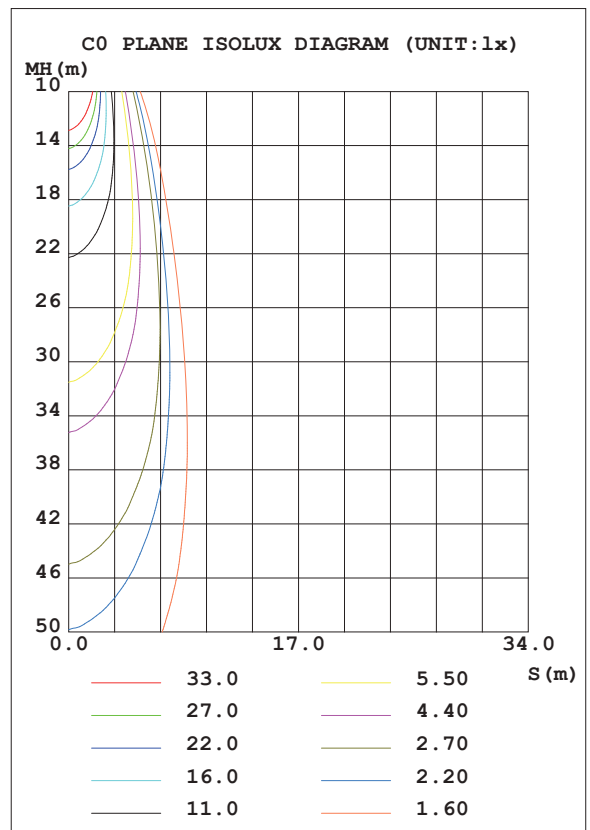
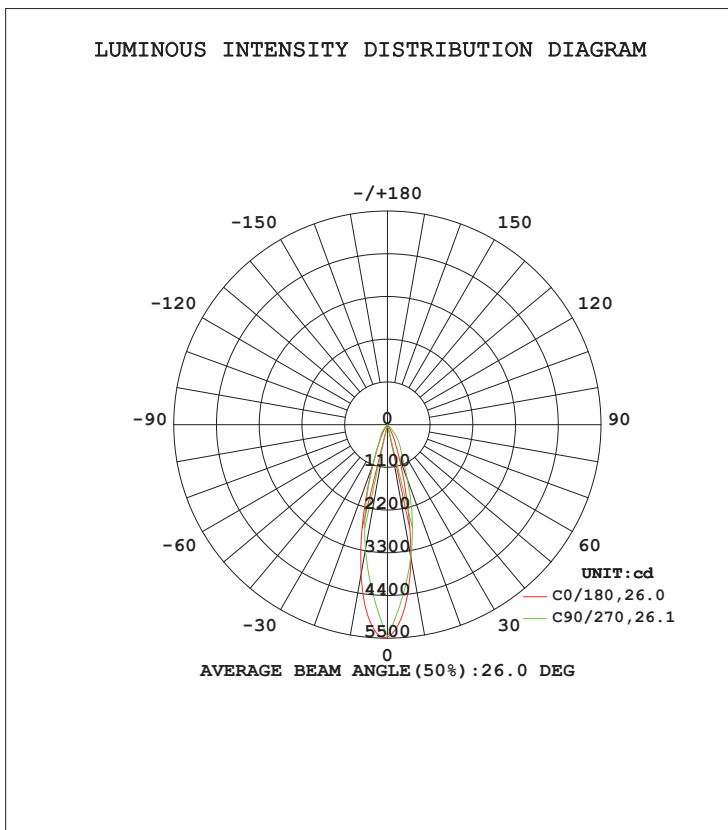
Installation drawing



CL103-75-7W-40K-R90-2401



CL103-95-15W-40K-R90-2401



Packaging information

Model	Inner box dimension	Carton box dimension	Unit net weight	Packing qty.	Carton box gross weight
CL103-75	120*120*90	505*505*300mm	0.34KG	48PCS	20KG
CL103-95	120*120*120	505*505*390mm	0.50KG	48PCS	28KG

Notice



- Please read the product specification carefully first to confirm that the use environment is in line with the condition on the specification before it is used.
- Please confirm the applicable power supply before use.
- When the product is connected with power supply, ensure that the switch is at the disconnected state to prevent electric shock.
- Operation against the rules may destroy your articles, or even endanger your personal safety.
- Make preliminary calculation for the quantity of light and then calculate the total power according to frequency of single light. Design the power distribution scheme.
- Dangerous high voltage. Non professional personnel should not repair.
- If the external wire of the light is damaged, it should be replaced by manufacturer or service agent or personnel with similar qualification to avoid danger.
- Common sense for handling: avoid impact or press the product with heavy objects. Handle with care during the transportation and installation process.



Yijia Industrial Park, Fuqian Road, Guanlan Town, Longhua, Shenzhen, Guangdong, China

Tel:+86-755-27608650
 Fax:+86-755-27608651
www.signcomplex.com
sales@signcomplex.com