

Fireproof round Downlight





Application

Meets kinds of needs in applications such as kitchen, living room, bedroom, bathroom, workplace, common areas, outside soffits and other hard to reach spaces.

FIREPROOF ROUND PANEL LIGHT

Flame retardant for 2 hours

2700K

5000K

5%

100%

5CCT Adjustable (2700K-5000K)

Brightness adjustable (5%-100%)

Features

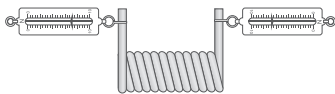
- The all-aluminum ultra-thin lamp body is designed to be wrapped with a red fireproof cover to prevent it from exposing the ignition point. The overall effect is beautiful and prevents light leakage.
- Adopting double-sided frosted diffusion plate for more even light. Multiple colour temperatures adjustable 2700K-5000K switching between warm white and cool white, as well as the driver is designed to have a high PF (PF>0.9), which can be dimmed with most conventional dimmers with a dimming range of up to 10%-100%.
- The frame adopts ADC 12, better heat dissipation.
- Easy to install, cut holes in the ceiling with a 1:1 cut-out template; connect the power supply to the cables; fix to the ceiling with spring clips.
- Fire protection standard ASTM E119, UL263, CAN ULCS101.

The Design for Lamp

- Waterproof ring for use in wet location.



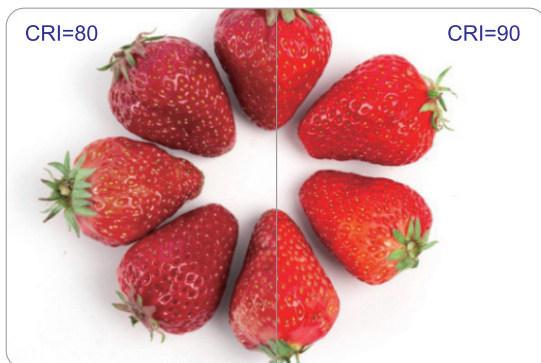
- Great spring elasticity, **50-70N** force.



- The frame adopts **ADC 12**, better heat dissipation.

- Acrylic light guide, laser dotting, **no yellowing**, long life span.

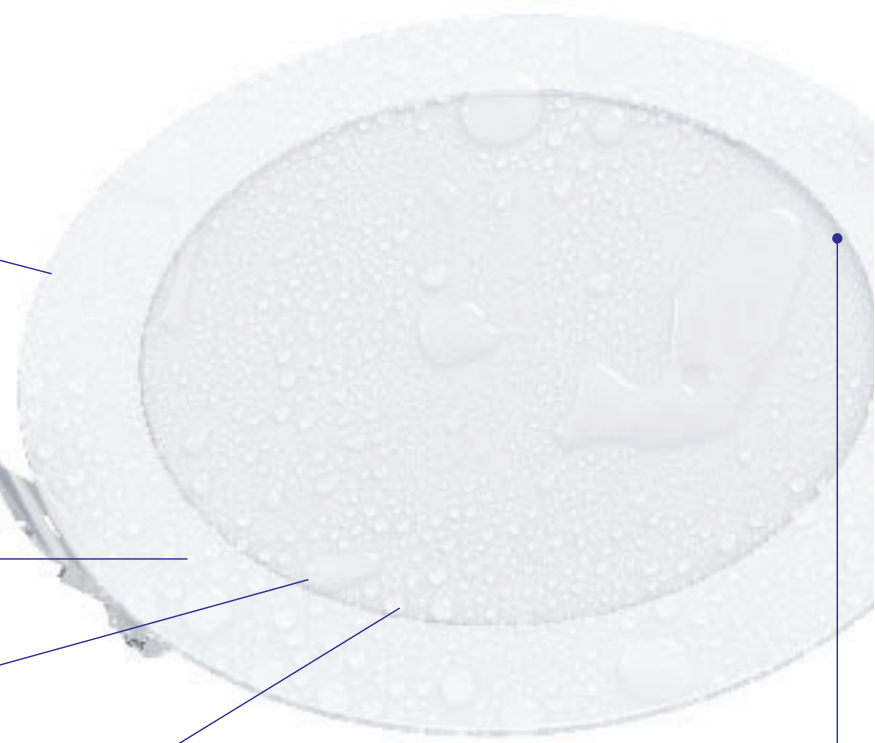
- Adopt edge-lit tech, visual uniformity, **CRI up to 90**.



- Lamp body and power pack connectors.

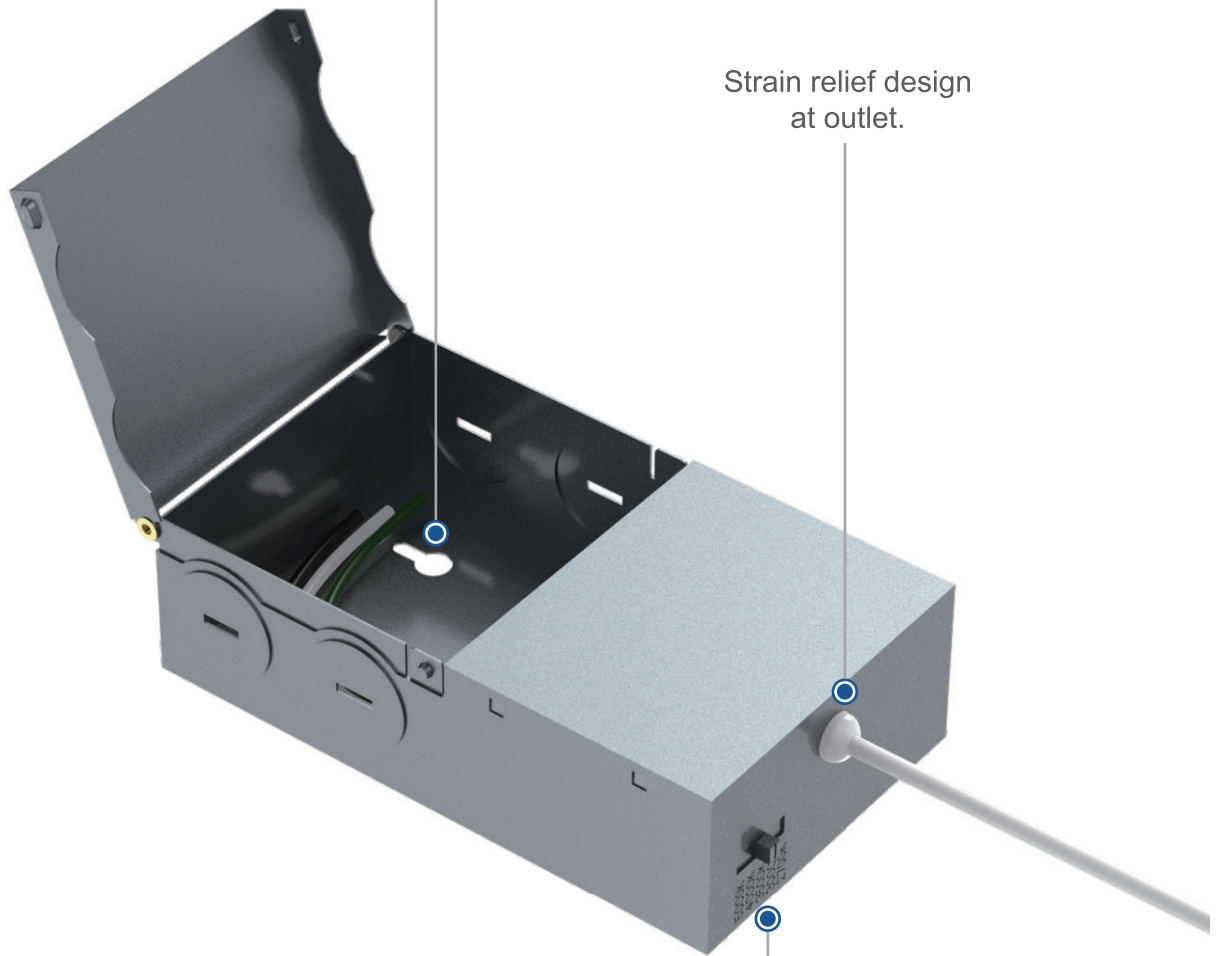


- Thickened fireproof iron plate.



The Design for Power Supply

Big wiring space, J-box VOL
8.4 in3, maximum of (5)N0
12 AWG or (7)N0 14 AWG
conductors.



Strain relief design
at outlet.

5 color temperatures
adjustable.
(The single CCT version
has no dip switch)



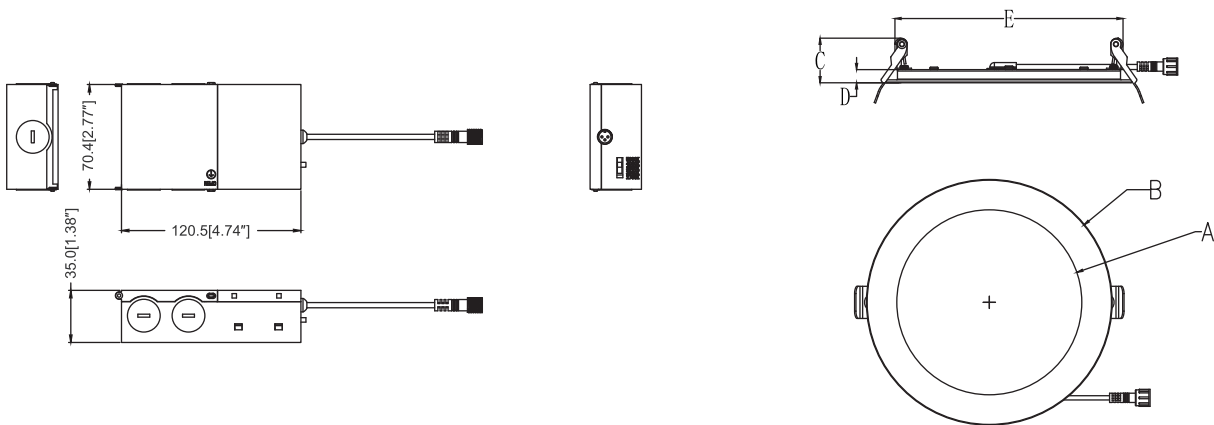
- 2700K
- 3000K
- 3500K
- 4000K
- 5000K

Specifications

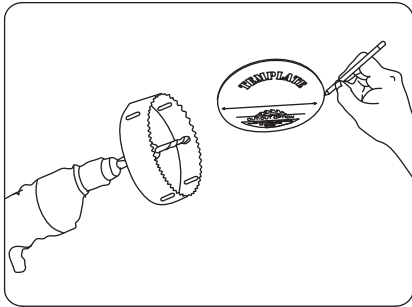
Model	Size	Watts	CCT	Luminous flux ± 10%	Cutout Size	Beam angle	IP rating	Fireproof level	Input voltage	LED model	CRI	PF
SC-FDL06-D03-A1-01RE	3inch	6W	2700k	500Lm	3-1/4"	110°	IP40	Clas A	100- 130VAC/ 50HZ	2835	≥90	>0.9
SC-FDL06-D03-A1-01*E			3000k									
			3500k									
			4000k									
			4500k									
			5000k									
			5700k									
6500k												
SC-FDL09-D04-A1-01RE	4inch	9W	2700k	750Lm	4-1/4"							
SC-FDL09-D04H-A1-01RE			3000k	900Lm								
			3500k									
			4000k									
			4500k									
			5000k									
			5700k									
6500k												
SC-FDL09-D04-A1-01*E	6inch	12W	2700K	990Lm	6-1/4"							
SC-FDL12-D06H-A1-01RE			3000K			1200Lm						
			3500K									
			4000K									
			4500k									
			5000k									
			5700k									
6500k												
SC-FDL12-D06-A1-01*E	8inch	18W	2700k	1500Lm	8-1/4"							
SC-FDL18-D08H-A1-01RE			3000k	1800Lm								
			3500K									
			4000K									
			4500k									
			5000k									
			5700k									
6500k												
SC-FDL18-D08-A1-01*E	8inch	18W	2700K	1500Lm	8-1/4"							
SC-FDL18-D08-A1-01*E			3000K									
			3500K									
			4000K									
			4500k									
			5000k									
			5700k									
6500k												

Dimensions (unit: inch)

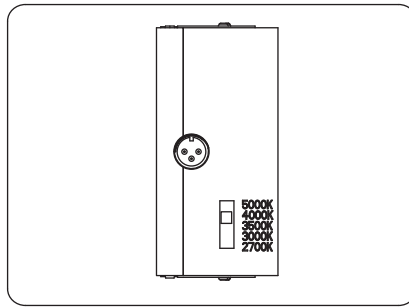
Model	A	B	C	D	E	Aperture
SC-FDL06-D03-AW-01RE	∅ 1.96"	∅ 3.74"	1.2"	0.55"	∅ 3.1"	∅ 3.25"
SC-FDL09-D04-AW-01RE	∅ 3.18"	∅ 4.91"	1.2"	0.55"	∅ 4.1"	∅ 4.25"
SC-FDL012-D06-AW-01RE	∅ 4.98"	∅ 6.61"	1.2"	0.55"	∅ 6.0"	∅ 6.25"
SC-FDL018-D08-AW-01RE	∅ 6.69"	∅ 8.66"	1.2"	0.55"	∅ 7.9"	∅ 8.25"



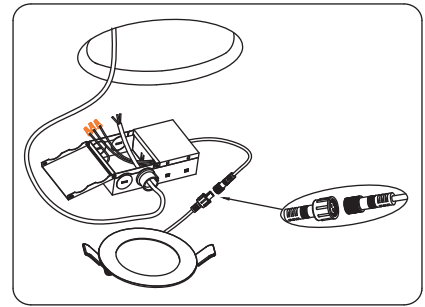
Installation diagram of CCT adjustable fireproof small round light



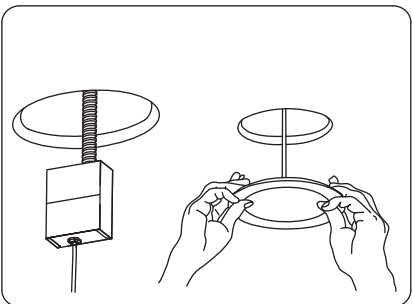
1. Turn off the switch that controls the lamp circuit.
2. According to the provided template, use the drilling tool to drill holes where you want to install the lamp.



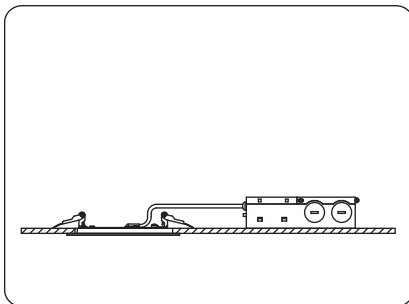
3. Turn the dip switch to the desired color temperature level.



4. Open the junction box, knock off the side cover, pass the externally connected wire through the mounting holes.
5. Use the provided wiring caps to connect the wires to the junction box. White is connected to the N pole, green to the ground wire, black to the L pole.
6. Stuff the connected wires into the junction box and close the cover.
7. Connect the wires between the lamp and the power supply terminal.



8. Place the junction box in the appropriate position in the ceiling where the hole has been drilled.
9. Hold the lamp with both hands and pull the spring upward, insert the lamp into the ceiling opening so that the lamp is stuck on the ceiling.



10. Installation completed.

Packaging information

Product model	Single lamp net weight	Gross weight per inner box	Inner box size	Carton size	Gross weight per carton	Packing Qty
SC-FDL06-D03-AW-01RE	0.23kg	0.28kg	143*90*65mm	675*302*200mm	12.8kg	40pcs
SC-FDL09-D04-AW-01RE	0.33kg	0.38kg	143*135*65mm	540*302*290mm	15.8kg	32pcs
SC-FDL12-D06-AW-01RE	0.4kg	0.45kg	180*180*65mm	380*340*380mm	9.6kg	20pcs
SC-FDL18-D08-AW-01RE	0.5kg	0.58kg	235*235*65mm	490*340*490mm	13kg	20pcs

Dimmer Compatibility List 12W

Dimmer Brand Model	Power	Max. output current(=mA)	Min. output current(=mA)	Max. dimming ratio	Max. dimming ratio
LEVITON 6674	12W	268	10	93%	3%
LUTRON DVCL-153P	12W	267	23	93%	8%
LUTRON CTCL-153P	12W	267	16	93%	6%
LUTRON MACL-153M	12W	260	18	91%	6%
ELECTR/V/ART 40201	12W	280	30	98%	10%
LUTRON SCL-153P	12W	268	5	93%	2%
LEVITON 6633-P	12W	285	1	99%	0%
LEVITON 6613	12W	284	9	99%	3%
LEVITON 66EV	12W	284	59	99%	21 %
LEVITON DDE06	12W	266	9	93%	3%
LUTRON SELV-303P	12W	271	19	94%	7%
LUTRON DVSELV-300P	12W	268	18	93%	6%

Dimmer Compatibility List 9W

Dimmer Brand Model	Power	Max. output current(=mA)	Min. output current(=mA)	Max. dimming ratio	Max. dimming ratio
LEVITON 6674	9W	200	14	91%	6%
LUTRON DVCL-153P	9W	205	20	93%	9%
LUTRON CTCL-153P	9W	210	14	95%	6%
LUTRON MACL-153M	9W	207	16	94%	7%
ELECTR/V/ART 40201	9W	220	30	100%	14%
LUTRON SCL-153P	9W	208	5	95%	2%
LEVITON 6633-P	9W	208	1	95%	0%
LEVITON 6613	9W	217	9	99%	4%
LEVITON 66EV	9W	217	55	99%	25%
LEVITON DDE06	9W	204	9	93%	4%
LUTRON SELV-303P	9W	207	19	94%	9%
LUTRON DVSELV-300P	9W	206	18	94%	8%

Notice



- Please read the specification first, to make sure the service environment matches the condition in the specification before using.
- Please confirm the applicable power supply before using.
- Make sure the switch of product is off before connect to the power supply to prevent electric shock.
- Operation against rules may damage your property even harm to your personal safety.
- Preliminarily estimate required quantity of LED panel lights, then according to the power rating of single panel light to figure out the total power and design power supply plan.
- Dangerous high voltage, Non-professionals are not allowed to maintain the products.
- If the exterior flexible cable or wire is damaged, it must exchange by the supplier, its agent or other similar qualified personnels to avoid dangers.