



## Temperature test report 温度测试报告



Model 型号: SC-SL8055-040-D-AW-NW 测试电压: 220V

Manufacture 制造厂商: Signcomplex



Time passes 时间经过: 2021/10/20 11:05 → 2021/10/20 20:05 .+...

Test position 测试位置:	0H	0.5H	1H	1.5H	2H	2.5H	3H	3.5H	4H	[*]	A	Max	STA
CBB capacitor CBB电容 (1)	27.02	41.66	44.31	45.02	45.1	45.19	45.35	45.2	45.28	...	45.11	105	OK
Electrolytic capacitor 电解电容-C2 (2)	27.78	59.28	63.87	64.34	64.45	64.13	64.52	64.41	63.97	...	62.85	105	OK
Transformer-Coil 变压器-线圈 (3)	28	74.46	79.17	79.75	79.42	79.82	79.63	79.12	78.95	...	77.85	120	OK
Transformer-core 变压器-磁芯 (4)	27.77	64.2	69.06	69.21	69.3	69.5	69.72	69.13	68.51	...	67.75	120	OK
IC 光耦-U1 (5)	26.64	36.01	36.92	37.73	37.49	37.05	37.24	37.18	37.38	...	36.34	120	OK
diode 二极管 (6)	27.53	61.65	65.94	66.59	66.63	66.62	66.69	66.46	66.35	...	65.2	120	OK
Patch diode 贴片二极管 (7)	27.46	76.08	79.96	80.52	80.56	80.6	80.6	80.36	80.29	...	78.94	120	OK
IC IC-U1 (8)	27.37	60.49	64.56	65.1	65.06	65.22	65.25	64.9	64.74	...	63.72	120	OK
TC TC点 (9)	27.4	56.84	60.67	62.02	61.19	60	60.43	60.59	60.62	...	59.24	90	OK
LED negative anode 灯珠引脚-1 (10)	26.52	42.86	44.14	44.13	44.12	44.14	44.17	43.9	43.91	...	43.1	90	OK
LED negative anode 灯珠引脚-2 (11)	26.9	46.6	47.89	48.23	48.2	48.18	48.2	47.94	47.99	...	47.08	90	OK
LED negative anode 灯珠引脚-3 (12)	26.6	43.73	44.92	45.23	45.3	45.25	45.26	45.03	45.09	...	44.22	90	OK
Ambient temperature 环境温度 (13)	25.39	24.93	24.47	24.95	24.59	25.49	24.65	24.49	25.42	...	24.58	N/A	OK
input voltage V 输入电压 V (14)	220.6	220.6	220.6	220.6	220.6	220.6	220.6	220.6	220.6	...	216.9	N/A	OK
Input current A 输入电流 A (15)	0.191	0.191	0.191	0.191	0.191	0.191	0.191	0.191	0.191	...	0.188	N/A	OK
Input power W 输入功率 W (16)	40.75	40.75	40.75	40.75	40.75	40.75	40.75	40.75	40.75	...	40.07	N/A	OK
Output voltage V 输出电压 V (17)	#VALUE!	#VALUE!	#VALUE!	#VALUE!	#VALUE!	#VALUE!	#VALUE!	#VALUE!	#VALUE!	...	#VALUE!	N/A	#VALUE!
Output current A 输出电流 A (18)	#VALUE!	#VALUE!	#VALUE!	#VALUE!	#VALUE!	#VALUE!	#VALUE!	#VALUE!	#VALUE!	...	#VALUE!	N/A	#VALUE!

Note 备注: SP+ =0pcs, SMD 2835 VMA, P-LED=MA 0W, TJ=°C, Rθ J-S=°C/W, K=0.9, TS=0°C

A、B分别代表某种测试条件下的平均值,其值取3.5-4H时间段的平均值; A、B represents the average value under certain test conditions, and its value is taken as the average value in the period of 3.5-4h.

Max是器件的最大限定使用温度, Max is the maximum allowable operating temperature of the device;

STA、STB是器件测试温度是否符合要求, STA、STB is whether the device test temperature meets the requirements;

A、B值小于Max值, A、B value is less than max value.

Test results 实验结果: PASS

Test Engineer: 杨桂英

Ambient temperature: 24.79 °C

Test Date: 2021-10-20

Humidity: 60.00 %

Confirm

review

Test equipment: Agilent 34970-A

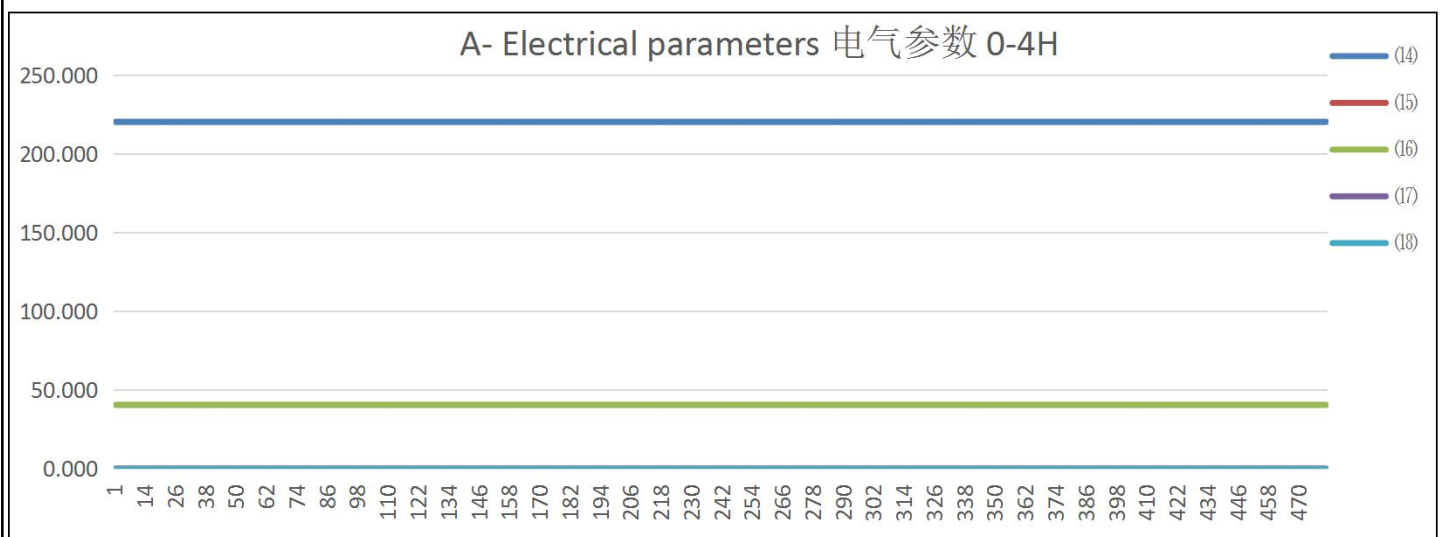
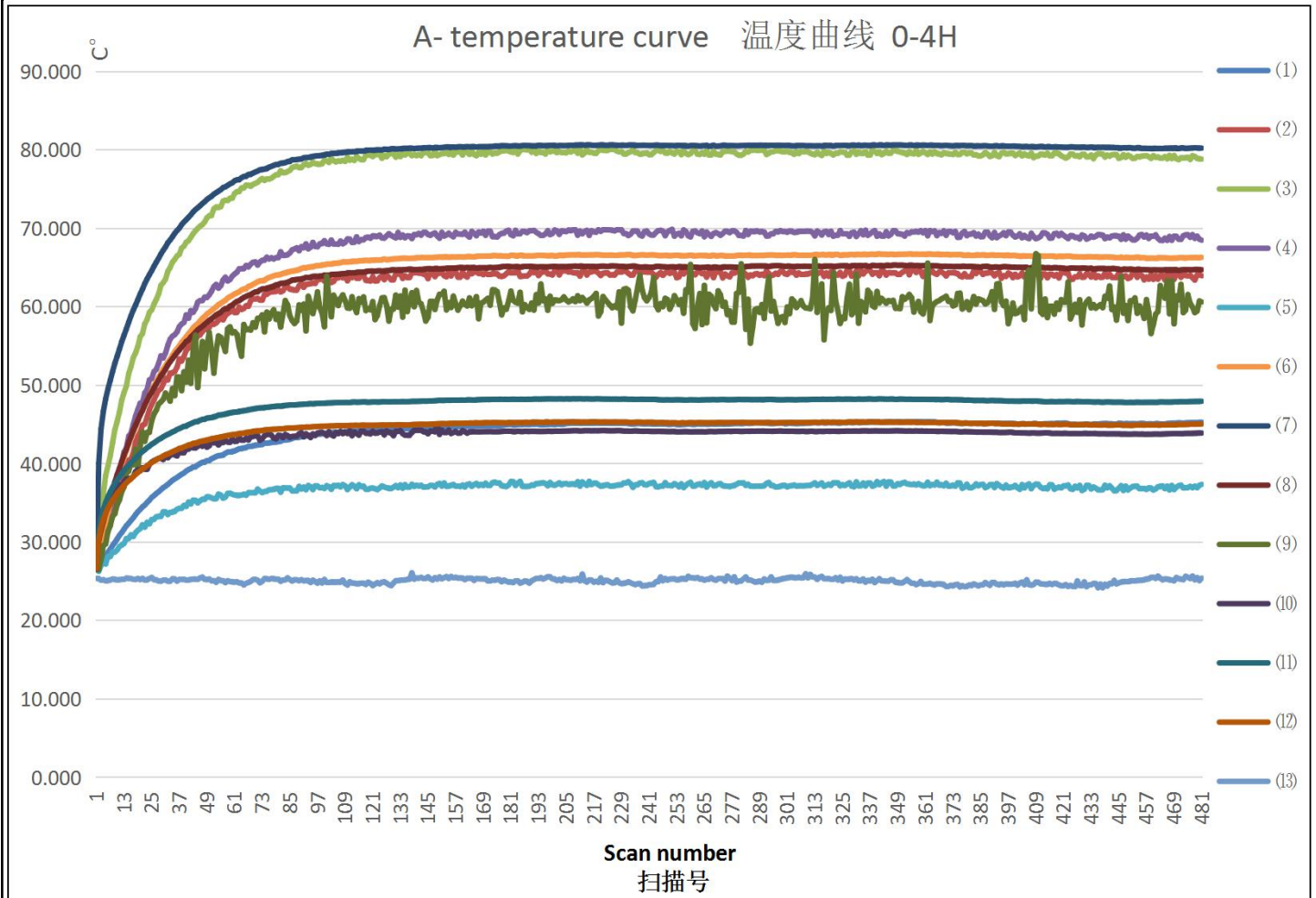
审核:

莫福美

复审:

莫福美

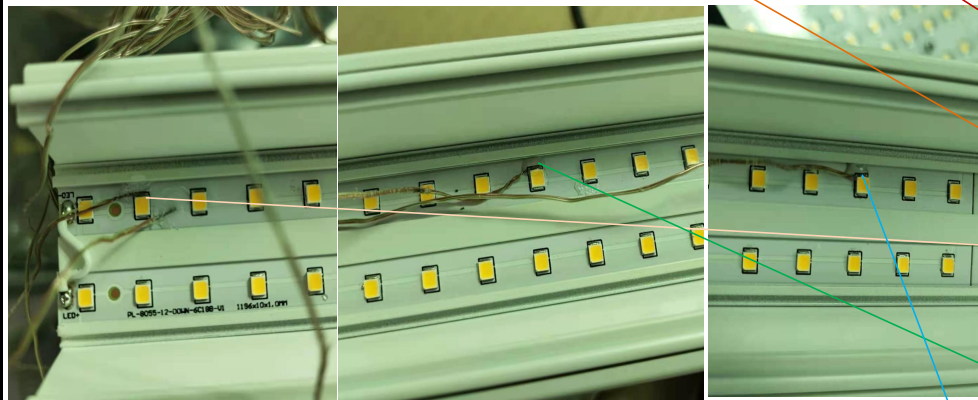
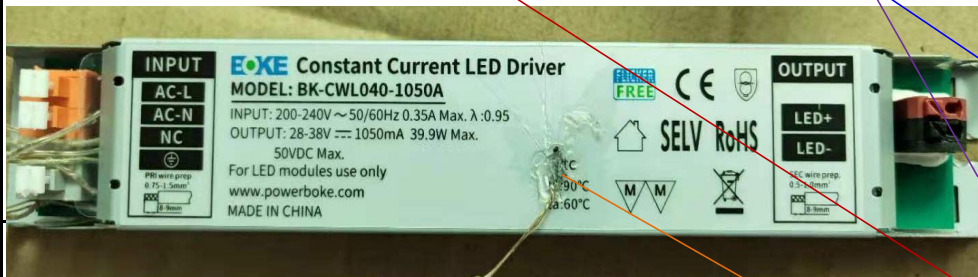
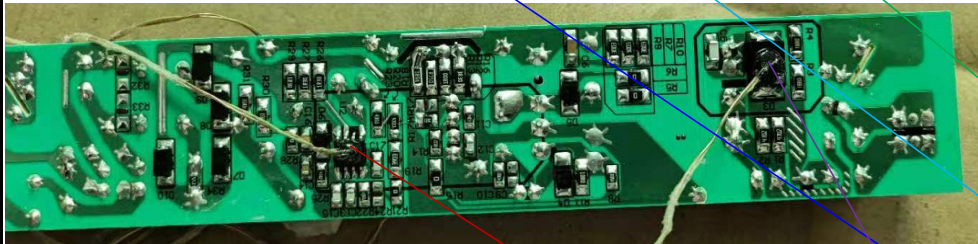
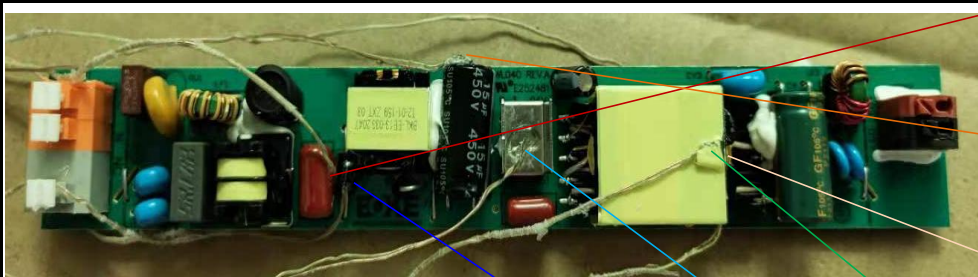
Test curve 测试曲线图



Ambient temperature: 24.79 °C  
 Humidity: 60.00 %  
 Test equipment: Agilent 34970-A

Confirm 审核: 莫福美

Test Engineer: 杨桂英  
 Test Date: 2021-10-20  
 review 复审: 莫福美

**Reference diagram 参考图:**


(1)	CBB capacitor	45.114
	CBB电容	25
(2)	Electrolytic capacitor	62.85
	电解电容-C2	25
(3)	Transformer-Coil	77.85
	变压器-线圈	25
(4)	Transformer-core	67.747
	变压器-磁芯	25
(5)	IC	36.336
	光耦-U1	25
(6)	diode	65.201
	二极管	25
(7)	Patch diode	78.942
	贴片二极管	25
(8)	IC	63.723
	IC-U1	25
(9)	TC	59.242
	TC点	25
(10)	LED negative anode	43.096
	灯珠引脚-1	25
(11)	LED negative anode	47.083
	灯珠引脚-2	25
(12)	LED negative anode	44.218
	灯珠引脚-3	25
(13)	Ambient temperature	24.576
	环境温度	25

Ambient temperature: 24.79 °C  
 Humidity: 60.00 %  
 Test equipment: Agilent 34970-A

Confirm 审核: 莫福美

Test Engineer: 杨桂英  
 Test Date: 2021-10-20  
 review 复审: 莫福美