



Signcomplex | light and smart



3000K



6500K



660nm



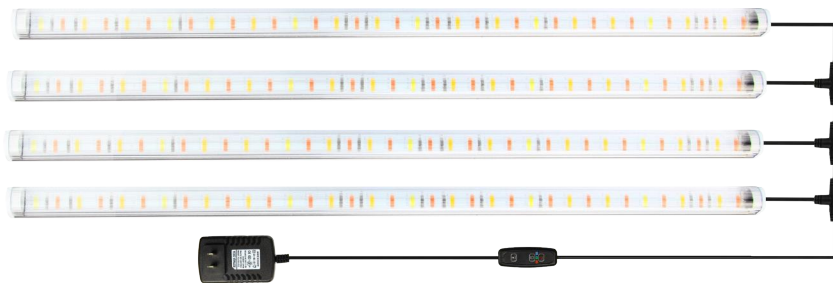
# LED Plant Grow Light Kits



## Description

LED plant grow light strip provides light compensation to plants in accordance with the natural law of plant growth and the principle of photosynthesis, which can promote rooting, germination, growth, prolong the blooming period, and improve quality, etc.

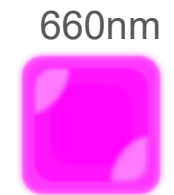
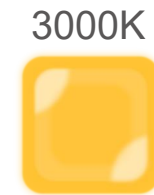
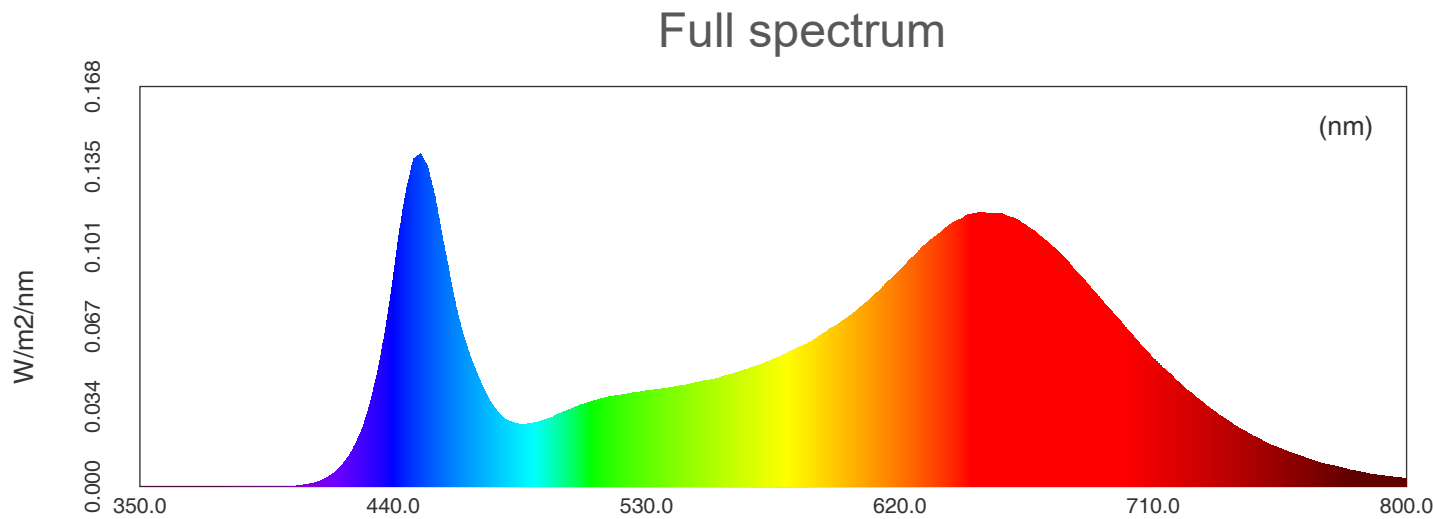
Support 2-way, 4-way and 6-way connection.



# Features

## 01. Full spectrum+660nm red light

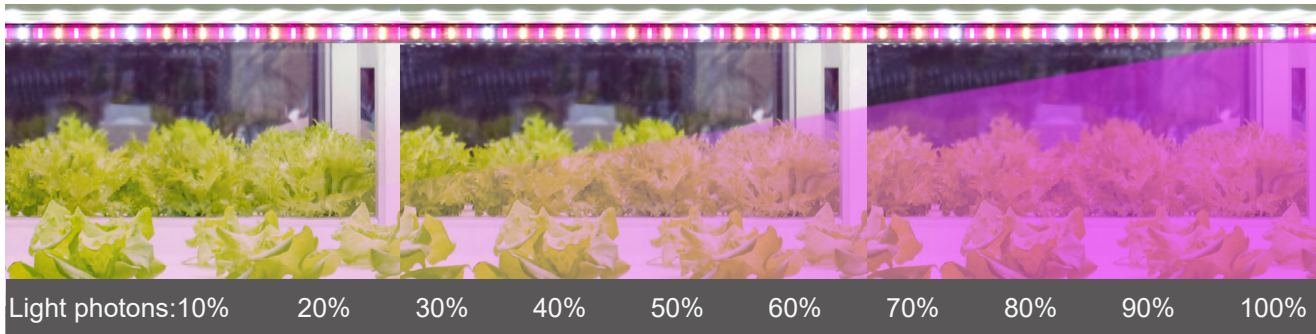
Quality full spectrum LED and 660nm red light providing perfect spectrum to improve vegetable, fruit and floriculture crops. Signcomplex professional LED grow lights you can control many aspects of crop growth to get better business results.



# Features

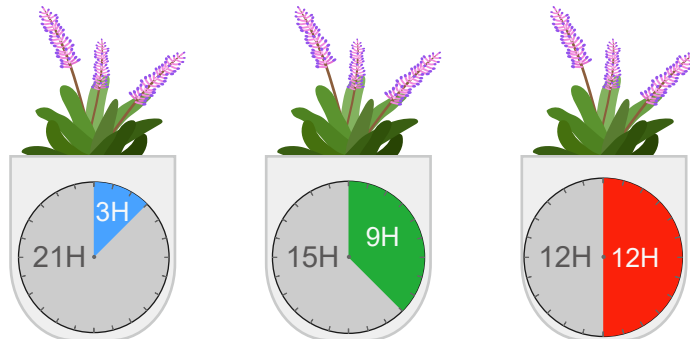
## 02. 10 level brightness

10%-100% light photons touch stepless dimming, 4K refresh rate without flicker under camera shooting.



## 03. Auto timing function

On/off and 3 types of timing setting to meet different daily cycle.



# Features

**04.** Module design, scientific structure, suit layer height 50-500mm (2-20inch) space



Note: High levels of radiant heat can stress or even burn the plants. With LED lighting you can control heat and light separately via different distance.

**05.** High quality plastic body with wave lens, no rust, corrosion and lighting uniformity



**06.** 3 types of installation: clip, adhesive and tie

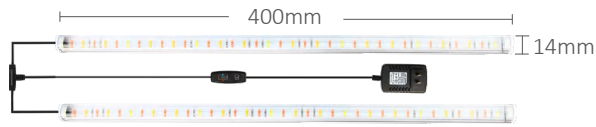
## Application:

Greenhouse or botanical laboratory; Family potted plant; Flower and green plant market.



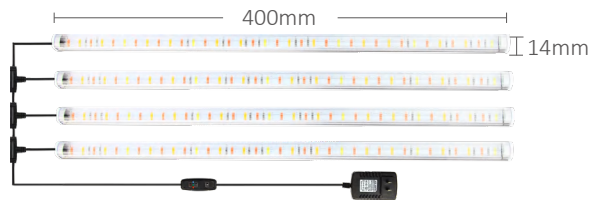
# Parameter

## 2-way



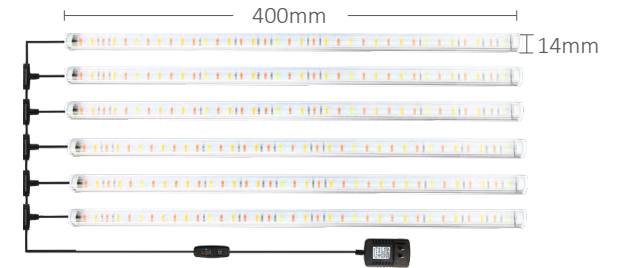
LED Type:	SMD2835
Color:	R+W(6500K)+WW(3000K)
Lux:	3600lx
PPFD:	85 $\mu$ mol/m <sup>2</sup> / s
LED Qty.:	72PCS
Power:	10W/PCS
Voltage:	12V
IP:	IP65
Beam angle:	120°

## 4-way



LED Type:	SMD2835
Color:	R+W(6500K)+WW(3000K)
Lux:	8000lx
PPFD:	190 $\mu$ mol/m <sup>2</sup> / s
LED Qty.:	144PCS
Power:	20W/PCS
Voltage:	12V
IP:	IP65
Beam angle:	120°

## 6-way



LED Type:	SMD2835
Color:	R+W(6500K)+WW(3000K)
Lux:	11500lx
PPFD:	280 $\mu$ mol/m <sup>2</sup> / s
LED Qty.:	216PCS
Power:	30W/PCS
Voltage:	12V
IP:	IP65
Beam angle:	120°

## Installation method

01.



The double-side tape behind each light strip can be stuck to the wall or the wooden board.

02.



The black wire tie included in the accessories can fix the light to the bracket.





## Packaging information

2-way	4-way	6-way
Inner box size: 430*76*70mm Single weight: 0.296kg Carton size: 580*450*476mm Quantity per carton: 48 sets/carton Carton weight: 15.2kg	Inner box size: 430*76*70mm Single weight: 0.396kg Carton size: 580*450*476mm Quantity per carton: 48 sets/carton Carton weight: 20.1kg	Inner box size: 430*120*65 mm Single weight: 0.569kg Carton size: 540*450*500mm Quantity per carton: 32 sets/carton Carton weight: 19.3kg

## Installation requirement

- ◆ The light strip and other accessories can not be pressed;
- ◆ Do not damage the conducting wire of the circuit board during installation;
- ◆ The installation of the light strip should be in accordance with the electrical safety standards. Only professional personnel can install the light strip;
- ◆ Ensure that the power supply is loaded by transformer conversion;
- ◆ When installed in contact with metal or conductor, insulation protection should be made at the contact place;
- ◆ Observe the polarity before installing, connect properly to prevent damage to the light strip;
- ◆ Please prevent static discharges when installing;
- ◆ Working temperature is -20°C~40°C.